

PREPARED BY



Model Input Status Report

H&H Modeling: Operations Model

Pensacola Hydroelectric Project Project No. 1494

March 30, 2021

Table of Contents

Executive Summary	iii
List of Abbreviations and Terms	iv
1. Introduction and Background.....	1
1.1 Project Description.....	1
1.2 Study Plan Proposals and Determination	2
2. USACE RiverWare Model	3
3. Flood Routing Model	5
3.1 Input Data	5
3.2 Proposed Methodology	5
4. Operations Model	6
4.1 Vertical Datums.....	6
4.2 Input Data and Preparation.....	6
4.2.1 Headloss vs. Turbine Discharge.....	7
4.2.2 Reservoir Elevation-Storage-Area Curves	8
4.2.3 Turbine Efficiency	9
4.2.4 Turbine Maximum Discharge.....	10
4.2.5 Tailwater Rating Curves	10
4.2.6 Unit Outages.....	10
4.2.7 Dissolved Oxygen Air Valves.....	10
4.2.8 Electricity Prices	11
4.2.9 Spillway Capacity.....	11
4.3 Proposed Methodology	11
5. Validation	13
6. Summary	14
7. References	15

List of Figures

Figure 1. Operations Model Study Area.....	1
Figure 2. Riverware Model Domain	4
Figure 3. Datum Transformations and Conversions	6

Appendices

Appendix A – USACE RiverWare Data

Appendix B – Operations Model Input Data

Executive Summary

Mead & Hunt is assisting Grand River Dam Authority (GRDA) with its intent to relicense the Pensacola Hydroelectric Project (Project), which is regulated by the Federal Energy Regulatory Commission (FERC). Flood control operations at the Project are regulated by the United States Army Corps of Engineers (USACE). GRDA proposed certain hydraulic and operations models for the relicensing study. The FERC's study plan determination requires GRDA to provide a model input status report. Mead & Hunt has performed this task on behalf of GRDA. This report documents the model inputs related to the Operations Model to be presented at the conference call.

USACE's RiverWare period-of-record model is a tool used by USACE Southwestern Division, Tulsa District (SWT) to simulate reservoir operations on the Arkansas River system upstream of the gage at Van Buren, Arkansas, including the Project. This model uses a daily time step and includes over 30 reservoirs.

Mead & Hunt is developing a Flood Routing Model for GRDA to replicate, as closely as possible, the Project flood routing decisions in the USACE RiverWare model as an input to the Operations Model. The Flood Routing Model is needed to investigate hypothetical design floods and alternative operating scenarios that would be difficult and time-consuming to program into the RiverWare model. The Flood Routing Model includes three reservoirs (Pensacola, Kerr, and Fort Gibson), which operate as a subsystem for flood routing, and uses daily time steps like the RiverWare model.

Mead & Hunt is developing an Operations Model for GRDA to simulate flood routing, hydropower scheduling, and other constraints on an hourly time step to support the Project relicensing effort. Because electricity prices vary widely within a day, hourly time steps provide improved accuracy for hydropower operations simulation. Output from the Flood Routing Model, most importantly the average daily total discharge, will be used as an input to the Operations Model. The Operations Model will seek to optimize the hydropower generation revenue at each facility while simultaneously satisfying various physical and operational constraints, including the flood routing decisions based on the RiverWare model as simulated in the Flood Routing Model. The Operations Model includes Pensacola Dam (Pensacola Hydroelectric Project) and Kerr Dam (Markham Ferry Hydroelectric Project), which is downstream of the Pensacola Dam. Both the Pensacola Dam and Kerr Dam are owned and operated by GRDA, and flood control operations at both projects are regulated by USACE.

The Flood Routing Model and Operations Model will be validated against the RiverWare model using the common metrics of the Coefficient of Determination (R^2) and the Nash-Sutcliffe Efficiency (NSE) to evaluate modeled total discharge and elevation.

List of Abbreviations and Terms

CADSWES	Center for Advanced Decision Support for Water and Environmental Systems
CFR	Code of Federal Regulations
CFS	Cubic Feet Per Second
CHM	Comprehensive Hydraulic Model
DO	Dissolved Oxygen
EEC	English Electric Company Limited
GRDA	Grand River Dam Authority
FERC	Federal Energy Regulatory Commission
ISR	Input Status Report
KW	kilowatt
MWh	Megawatt-hour
NAVD88	North American Vertical Datum of 1988
NGVD29	National Geodetic Vertical Datum of 1929
NSE	Nash-Sutcliffe Efficiency
OAC	Oklahoma Administrative Code
PD	Pensacola Datum
POR	Period of Record
Project	Pensacola Hydroelectric Project
PSP	Proposed Study Plan
R ²	Coefficient of Determination
RSP	Revised Study Plan
SPD	Study Plan Determination
SWT	Southwestern Division, Tulsa District
TW	Tailwater
USACE	United States Army Corps of Engineers
USGS	United States Geological Survey
VBA	Visual Basic for Applications

1. Introduction and Background

1.1 Project Description

The Pensacola Hydroelectric Project is owned and operated by GRDA and regulated by the FERC. The Pensacola Dam is in Mayes County, Oklahoma on the Grand-Neosho River. Pensacola Dam impounds Grand Lake. Construction of Pensacola Dam was completed in 1940. Authorized purposes for the Project include flood control, recreation, and hydropower. **Figure 1** displays the study area. Downstream of Pensacola Dam, GRDA also owns and operates the Robert S. Kerr Dam as the Markham Ferry Hydroelectric Project. Kerr Dam is also in Mayes County and impounds Lake Hudson, also known as Markham Ferry Reservoir. Flood control operations at both Pensacola Dam and Kerr Dam are regulated by USACE.

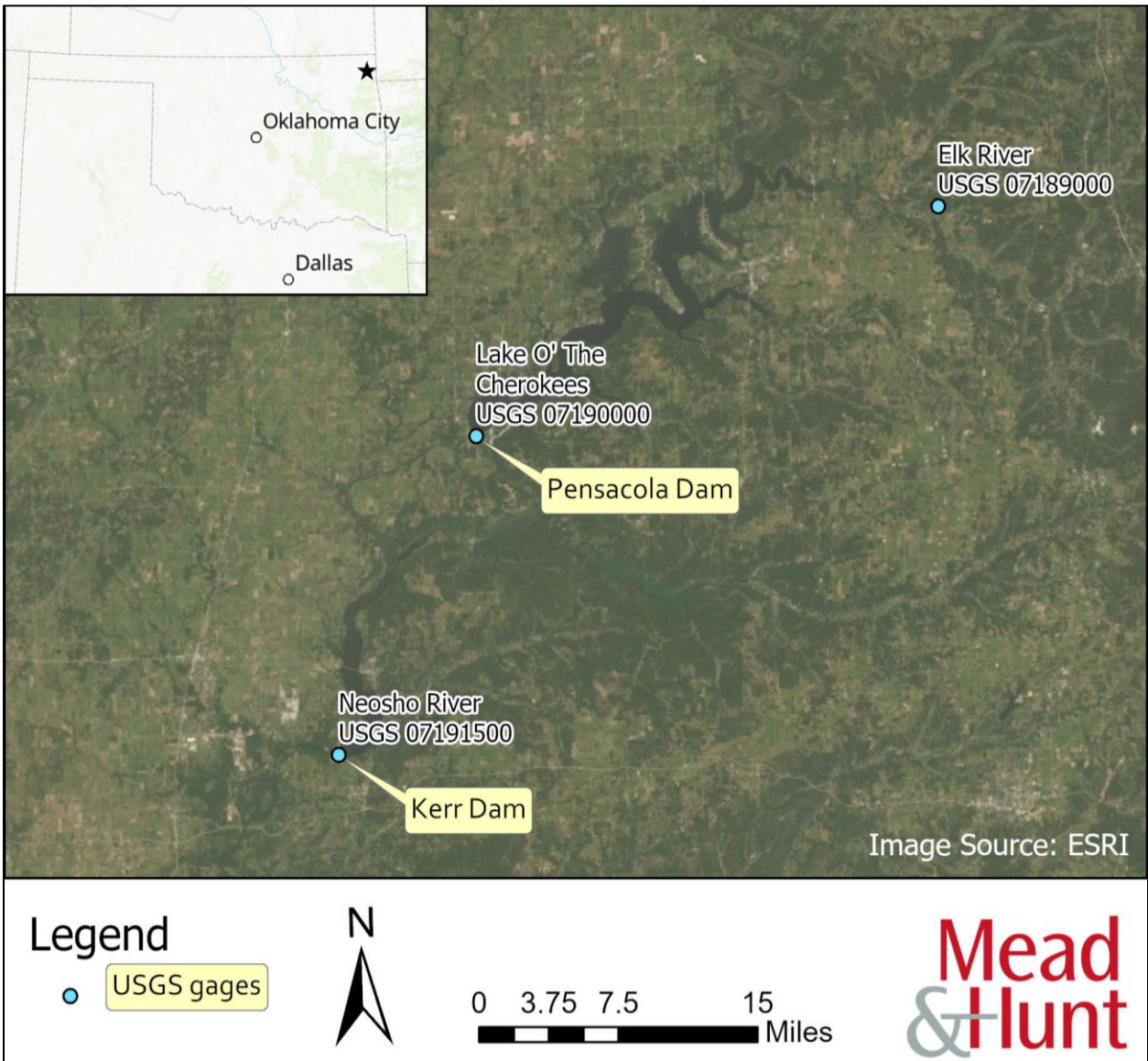


FIGURE 1. OPERATIONS MODEL STUDY AREA

1.2 Study Plan Proposals and Determination

GRDA is currently relicensing the Project. The timeline of study plan proposals and determination is as follows:

1. On April 27, 2018, GRDA filed its Proposed Study Plan (PSP) to address hydrologic and hydraulic modeling in support of its intent to relicense the Project.
2. On September 24, 2018, GRDA filed its Revised Study Plan (RSP).
3. On November 8, 2018, the FERC issued its Study Plan Determination (SPD) for the Project.
4. On January 23, 2020, the FERC issued an Order on the Request for Clarification and Rehearing, which clarified the timeline for certain milestones applicable to the relicensing study plan.

The PSP and RSP recommended the development of an Operations Model to synthesize and create events that inform or set boundaries for the Comprehensive Hydraulic Model (CHM). The FERC's SPD included the following determination specific to the Operations Model:

We recommend that GRDA demonstrate in the ISR [Initial Study Results report, scheduled for September 2021] that it has validated its model results against the RiverWare output.

This report provides an input status and documents the proposed development of the Flood Routing Model and Operations Model, as well as the proposed validation of results against the USACE RiverWare output.

2. USACE RiverWare Model

The United States Army Corps of Engineers RiverWare period-of-record model is a tool used by USACE Southwestern Division, Tulsa District to simulate reservoir operations on the Arkansas River system upstream of the gage at Van Buren, Arkansas (USACE, 2020). The model simulates hydrologic inflows, evaporation, seepage, water deliveries, reservoir management, flood control, and hydropower production on a daily time step from 1940 through 2017. The model area includes more than 30 reservoirs, and the main control point for flood routing decisions is at the Van Buren gage. When flows at Van Buren are projected to exceed the seasonal guide curve, upstream reservoirs store water to limit flow at Van Buren. Other reservoirs or reservoir subsystems also have their own flood release restrictions. Reservoir balance levels throughout the system are managed to limit flooding systemwide.

Under Section 7 of the Flood Control Act of 1944 (CFR, 1944), the USACE has the responsibility to prescribe releases from Pensacola Dam and Kerr Dam under active or anticipated flood conditions (CFR, 1945). The USACE may exercise direct control over the facilities or provide instructions to GRDA to manage releases for the purpose of basin-wide flood mitigation. The RiverWare model illustrates how reservoir levels at Pensacola Dam and Kerr Dam may be increased during a large flood event impacting Van Buren, not because the spillway capacity or downstream channel capacity is exceeded at either facility, but because water is held back to limit flow at Van Buren.

USACE SWT provided Mead & Hunt with time series, tabular, and other data from the RiverWare model, and examples of these data are included in **Appendix A**. The model domain is shown in **FIGURE 2**.

Mead & Hunt downloaded the RiverWare Technical Documentation from the Center for Advanced Decision Support for Water and Environmental Systems (CADSWES) at University of Colorado Boulder, College of Engineering and Applied Science website and referenced it to understand how to replicate the modeling methods applicable to this study (CADSWES, 2020). CADSWES develops RiverWare, a river and reservoir/hydropower planning and management tool that is licensed by the University of Colorado Technology Transfer Office, and widely used by agencies and consultants. Documentation for the related TAPER model was also provided by USACE (Steffen, Stringer, Daylor, Neumann, & Zagona, 2015). USACE SWT and CADSWES staff also provided aid in understanding the RiverWare model and how to apply its objects and methods to this study.

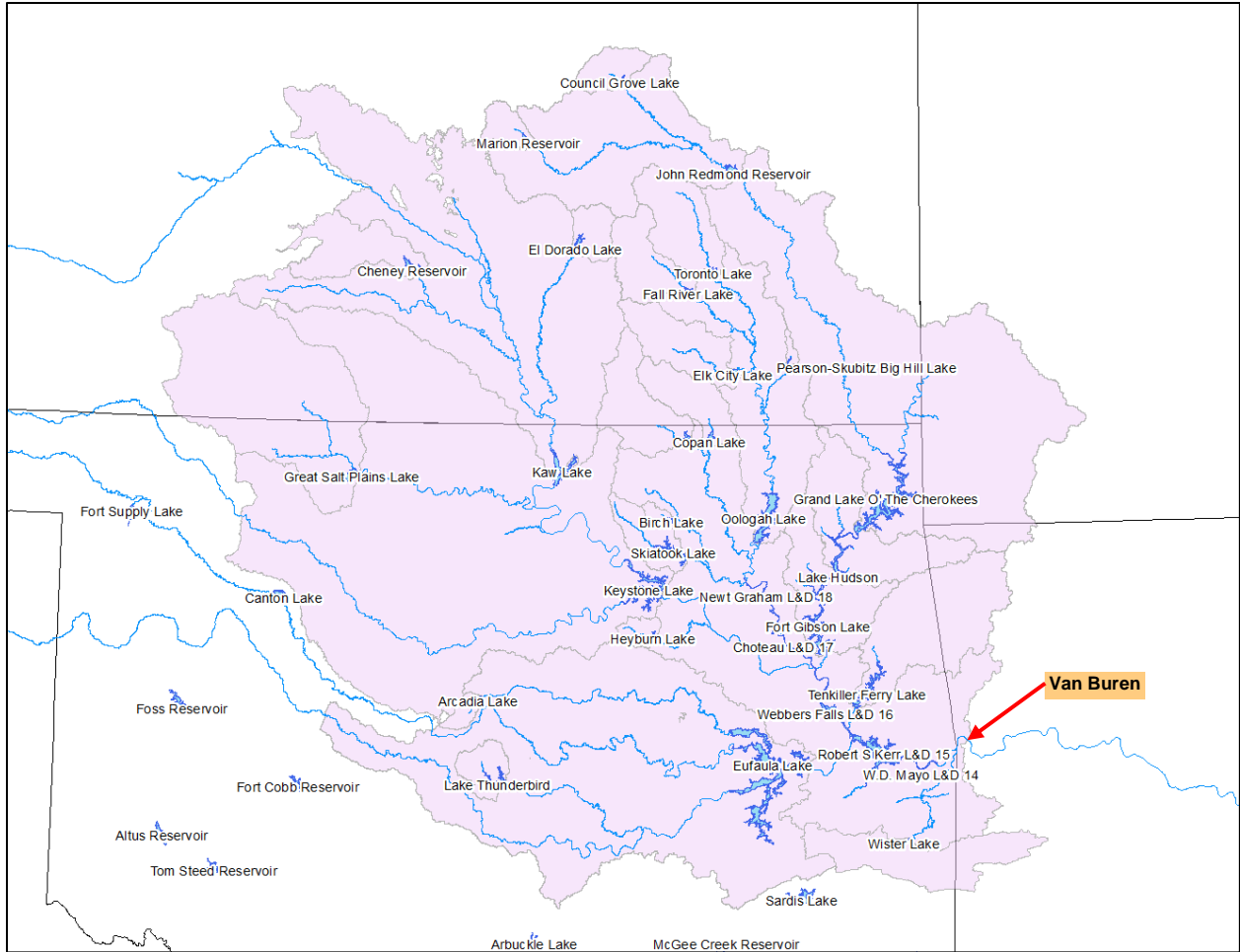


FIGURE 2. RIVERWARE MODEL DOMAIN

3. Flood Routing Model

The FERC SPD recommends GRDA demonstrate it has validated its model results against the RiverWare model output. Mead & Hunt is developing a Flood Routing Model to replicate, as closely as possible, the Project flood routing decisions in the RiverWare model as an input to the Operations Model. The Flood Routing Model includes (from upstream to downstream) Pensacola Dam, Kerr Dam, and Fort Gibson Dam because these operate as a subsystem for reservoir level balancing. The Flood Routing Model is needed to investigate hypothetical design floods and alternative operating scenarios that would be difficult and time-consuming to program into the RiverWare model.

3.1 Input Data

Input data for the Flood Routing Model includes river discharge upstream of Pensacola Dam, local inflows to each reservoir, evaporation and seepage rates, reservoir stage-storage-area tables, reservoir operating level tables, maximum regulated spill tables, induced surcharge tables, seasonal Project target reservoir elevation table, and hydrologic routing coefficient tables from the RiverWare model.

3.2 Proposed Methodology

The Flood Routing Model is being developed using Visual Basic for Applications (VBA) code within an Excel spreadsheet. The VBA code loops through the time series calculations to solve the model. The VBA code computes formulas to calculate the system state and flood routing decisions for each daily time step, then copies the formulas to the next daily time step and stores the results as plain text in the Excel spreadsheet. In this way, the file size is reduced and the computation speed improved for the model.

Minimum surcharge and maximum regulated outflows are calculated individually from upstream to downstream. Operating levels are balanced upstream to downstream and highest to lowest, within calculated outflow limits. Individual dam and Lower Grand (Neosho) subsystem limits are checked. Conservation pool rules and hydropower rules are ignored for purposes of flood routing. Modeled objects include reservoirs, control points, and reaches.

Methods from the RiverWare model replicated in the Flood Routing Model include:

- Flow combined at nodes and routed downstream hydrologically.
- Evaporation calculated using historical evaporation rates considering modeled reservoir area.
- Constant seepage assumed: 10 cubic feet per second (cfs) at Kerr Dam and 20 cfs at Fort Gibson Dam.
- Minimum surcharge and maximum regulated outflow calculated using the USACE SWT flat top surcharge method.
- Allowable rising release change and allowable falling release change limit how quickly the controlled releases are increased or decreased, subject to other limitations such as minimum surcharge.
- Operating level balancing seeks to maintain similar balance levels in each reservoir.
- Regulating discharges of 100,000 cfs established in the water control manual are considered for Pensacola Dam, Kerr Dam, and Fort Gibson Dam (USACE, 1980).

4. Operations Model

Mead & Hunt is developing an Operations Model to simulate flood routing, hydropower scheduling, and other Project constraints on an hourly time step. Because electricity prices vary widely within a day, hourly time steps provide improved accuracy for hydropower operations simulation. The Operations Model is being developed using VBA code within an Excel spreadsheet, as described in more detail below.

4.1 Vertical Datums

Data sources for this study use a variety of vertical datums. Unless otherwise noted, data related to Pensacola Dam and Grand Lake is referenced to the Pensacola Datum (PD) and data related to Kerr Dam and Lake Hudson is referenced to the National Geodetic Vertical Datum of 1929 (NGVD29). To convert from PD to NGVD29, add 1.07 feet. To convert from NGVD29 to the North American Vertical Datum of 1988 (NAVD88), add 0.33 feet. **Figure 3** displays datum transformations and conversions (Hunter, Trevisan, Villa, & Smith, 2020).

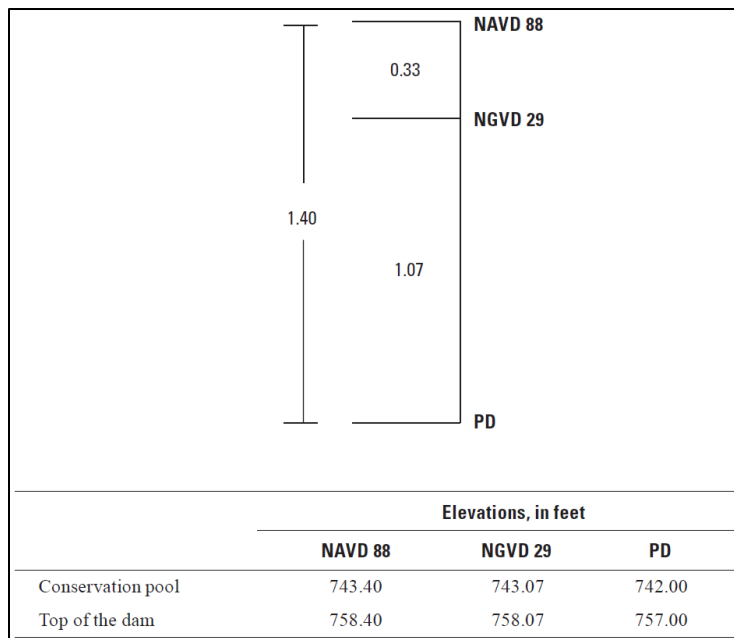


FIGURE 3. DATUM TRANSFORMATIONS AND CONVERSIONS
SOURCE: (HUNTER, TREVISAN, VILLA, & SMITH, 2020).

4.2 Input Data and Preparation

Mead & Hunt obtained data for the Operations Model from GRDA and USACE. Input data includes project drawings, rating curves, time series data, and information from the RiverWare model. Most of the time series data was available in hourly or sub-hourly time steps from April 1, 2004 through December 31, 2017 (the end date in the RiverWare model), so this period was selected for analysis. Descriptions and sources of each input data set are described below, along with descriptions of the methods used to prepare the data for input to the Operations Model. **Appendix B** contains a collection of the information described in this section.

4.2.1 Headloss vs. Turbine Discharge

GRDA sent Mead & Hunt drawings of the Pensacola and Kerr hydroelectric facilities showing the dimensions of the water passages from the intake to the tailrace at each powerhouse (GRDA, 1961), (GRDA, 1987). The dimensions shown on these drawings were used to estimate the hydraulic friction and form losses as part of the turbine net head calculation.

Facility drawings for the Pensacola and Kerr facilities were used to identify specific friction loss (i.e., conduit roughness) and minor loss (e.g., bends, contractions, or entrance and exit losses) components between the reservoirs and the turbines. It is common practice for turbine manufacturers to include the hydraulic losses from the scroll case entrance through the tailrace in the turbine hill curve efficiencies, so these losses were specifically excluded from the headloss calculations.

Total headloss was calculated using a combination of the Darcy-Weisbach formula for friction losses and assumed minor loss coefficients. To simplify spreadsheet calculations, major and minor losses are expressed in terms of a flow-based headloss coefficient, Kq , according to the equations below:

$$H_L = Kq * Q^2$$

$$Kq = \frac{0.025 * f * L}{D_h^5}$$

$$Kq = \frac{Kv}{2gA^2}$$

where:

H_L = headloss (ft)

Kq = flow-based headloss coefficient

Kv = velocity-based headloss coefficient

Q = turbine discharge (ft³/s)

L = pipe length (ft)

f = Darcy-Weisbach resistance coefficient

D_h = Hydraulic diameter (ft)

A = pipe wetted area (ft²)

g = gravity constant (32.16 ft/s²)

The resistance coefficient varies with pipe size, pipe roughness, fluid kinematic viscosity, and discharge. Resistance coefficients were determined based on the following equations, which approximate the curves of the Moody Diagram.

Von Karman-Prandtl equation for smooth pipe flow:

$$\frac{1}{\sqrt{f}} = 2 \log_{10}(Re\sqrt{f}) - 0.8$$

$$Re = D_h V \nu$$

where:

Re = Reynold's Number

V = average velocity (ft/s)

ν = kinematic viscosity of fluid (ft²/s)

Von Karman-Prandtl equation for rough pipe flow:

$$\frac{1}{\sqrt{f}} = 2 \log_{10} \frac{D_h}{2k} + 1.74$$

where:

k = absolute roughness of pipe wall (ft)

Colebrook-White equation for transition flow:

$$\frac{1}{\sqrt{f}} = -2 \log_{10} \left(\frac{k}{3.7D_h} + \frac{2.51}{Re\sqrt{f}} \right)$$

Friction losses for Pensacola were calculated assuming water at 50° F, roughness of 0.00015 feet (steel), and acceleration due to gravity of 32.146 ft/s². Minor loss coefficients were selected using the appropriate Hydraulic Design Criteria charts (USACE, 1987).

The total calculated flow-based headloss coefficient (Kq) for Pensacola was 4.50x10⁻⁷, and for Kerr was 4.11x10⁻⁹.

4.2.2 Reservoir Elevation-Storage-Area Curves

For model validation purposes, reservoir elevation-storage-area rating tables for Pensacola and Kerr from the RiverWare model will be used in the Operations Model. Other more recent bathymetric survey data may be incorporated post-validation to improve later simulations (Dewberry, 2011), (Hunter, Trevisan, Villa, & Smith, 2020).

4.2.3 Turbine Efficiency

Pensacola

Efficiency curves for the Pensacola generators were transcribed from the Siemens efficiency calculations (Siemens, 1999) in terms of generator efficiency vs. percent rated generator load, assuming rated brake power of 18,112 kilowatt (kW) at 0.90 power factor.

Efficiency vs. turbine discharge vs. net head curves for the Pensacola turbines (air valves closed condition) were transcribed from the Voith hill curve (Voith, 1997). Efficiency curves for the condition when the dissolved oxygen (DO) air valves are fully open were transcribed from the Accusonic Unit 3 preliminary performance test report (Walsh, 1999).

Two efficiency curves were developed for Pensacola: one for normal operation with all the DO air valves closed, and one for derated operation with all the DO air valves fully open (90 degrees open).

The normal operation turbine efficiency vs. turbine discharge vs. net head curve was transcribed from the Voith hill curve into a Excel spreadsheet table. The generator efficiency vs. load curve was then multiplied by the turbine efficiencies to develop a total turbine-generator efficiency vs. discharge vs. net head table.

The derated operation (air valves open) turbine efficiencies at a net head of 117.5 feet were transcribed from the Accusonic report. The ratio of derated turbine efficiency to normal turbine efficiency for a given turbine discharge was assumed to be constant across the entire range of net head values used (95 feet to 140 feet). After extrapolating the derated turbine efficiencies, the generator efficiency vs. load curve was again applied to develop a total turbine-generator efficiency vs. turbine discharge vs. net head table for derated operation.

Kerr

Efficiency curves for the Kerr generators were transcribed from the table in Section 2.3.1 of the Alstom generator calculations (Bertrand, 2009) in terms of generator efficiency vs. percent rated generator load, assuming rated brake power of 33,036 kW at 0.93 power factor.

Power vs. turbine discharge vs. net head curves for the Kerr turbines (pre-refurbishment) were transcribed from the original 1962 prototype unit curves (EEC, 1962a). Relative turbine efficiencies for the Kerr turbines (post-refurbishment) were transcribed from the Alstom index test results (Alstom, 2010).

The efficiency curves for Kerr were developed based on the original 1962 prototype efficiency curve and the 2010 post-refurbishment index testing. The total turbine-generator efficiency vs. turbine discharge vs. net head table for the original units was developed using a similar methodology as for Pensacola. Alstom reported index test results as a relative turbine efficiency (refurbished units relative to the original 1962 prototype units) vs. refurbished turbine power at a net head of 56 feet. Index efficiencies were applied across the entire domain of the original hill curve by multiplying the relative efficiency at an equivalent discharge by the maximum original turbine efficiency value at each net head.

4.2.4 Turbine Maximum Discharge

The maximum allowable turbine discharge (to avoid cavitation) vs. net head limit for Pensacola was determined from the entrance edge cavitation lines on the Voith hill curve (Voith, 1997). The maximum turbine discharge vs. net head limit for Kerr was determined from the limit of Kaplan operation line on the original 1962 prototype unit curves (EEC, 1962b).

4.2.5 Tailwater Rating Curves

The tailwater (TW) elevation vs. total discharge rating curve for Pensacola Dam was developed based on the historical observed TW elevation and discharge paired data provided by GRDA. The elevation-discharge data pairs were plotted and a table of paired values was developed based on a best fit through the observed points.

The TW elevation vs. total discharge rating curve for Kerr Dam was developed using United States Geological Survey (USGS) gage data: Neosho River near Langley, OK (USGS Gage No. 07190500). The gage data pairs were plotted and a table of paired values was developed based on a best fit through the gage data points.

4.2.6 Unit Outages

Individual turbine unit outages are recorded in terms of the start and end date/time of each outage. The outages can be either scheduled or unscheduled, and the type of outage can be forced, planned, maintenance, or de-rated generation output (e.g., DO air valve operation at Pensacola).

Records of the date and time for the beginning and ending of outages for individual turbine-generator units were used to construct time series of unit outages. Overlapping outages were reconciled when the beginning or ending timestamp of a listed outage fell within the timeframe of another outage for the same unit. An hourly time series was constructed to indicate the status of each individual unit (online or offline) for each time step. Lastly, the total number of units online for each time step at each facility was determined. This data was used by the operations model to determine the total turbine discharge capacity available for a given time step.

4.2.7 Dissolved Oxygen Air Valves

Dissolved Oxygen data, including measured DO levels and the status of each of the six Pensacola DO air valves, was available between January 1, 2004 and April 13, 2006 (non-contiguous data). Oklahoma Water Resources Board Title 785.45-5-12 describes seasonal DO concentrations needed to support various subcategories of Fish and Wildlife beneficial use designations for streams (OAC, 2013). The prescribed seasonal DO concentrations were considered along with records of measured DO concentrations and individual air valve status from Pensacola to estimate when the air valves may have typically been opened during the modeled period of analysis, as described below. The model accounts for the status of the air valves by switching between two different turbine efficiency curves to represent the decrease in turbine efficiency when the air valves are open.

For Pensacola, the prescribed seasonal DO concentrations were considered along with records of DO levels; individual air valve status; actual generation output; and head, efficiency, and flow data to estimate when the air valves may have typically been opened during the modeled period of analysis. There are no DO air valves at Kerr.

4.2.8 Electricity Prices

Hourly day-ahead and real-time locational marginal prices (in terms of dollars per megawatt-hour [MWh]) for electrical energy produced at Pensacola and Kerr were available from March 1, 2014 to December 31, 2020.

Daily natural gas settlement prices for the Henry Hub trading point were available from March 1, 2004 through December 31, 2020. Natural gas prices were used to index the electricity prices across the full range of analysis dates.

Hourly electricity prices for both day-ahead and real-time markets over the period between March 1, 2014 and December 31, 2020 were divided by the corresponding daily natural gas price to determine the hourly heat rate pattern for this period. This heat rate pattern was then applied to corresponding dates when no hourly electricity prices were available (prior to March 1, 2014). The assumed hourly heat rate was then multiplied by the actual daily historical natural gas settlement prices going back to April 1, 2004 to estimate the historical electricity prices for the period when actual hourly data was not available.

4.2.9 Spillway Capacity

USACE spillway discharge capacity ratings were reviewed for Pensacola and Kerr, but for the purposes of model validation the rating tables from the RiverWare model will be used instead (USACE, 1990), (USACE, 1991). Other more detailed spillway capacity data may be incorporated post-validation to improve later simulations.

4.3 Proposed Methodology

The objective function of the Operations Model is to maximize the hydropower generation revenue at each facility while simultaneously satisfying various physical and operational constraints (e.g., reservoir level management, flood routing from the Flood Routing Model, scheduling of power sales, and operation of the turbines within their allowable range). Many dependent functions comprise the overall objective function and are summarized here:

- Total discharge computed by the Flood Routing Model is also used by the Operations Model when the reservoir transitions into flood operations. Otherwise, for normal operations, discharge is determined based on optimal hydropower generation scheduling.
- Modeled revenue is a function of scheduled power and electricity price (both day-ahead and real-time).
- Power is a function of turbine discharge, net head, and total turbine-generator efficiency.
- Net head is a function of headwater, tailwater, and headloss.
- Efficiency is a function of turbine discharge, net head, and DO air valve open/closed status (Pensacola only).

- Turbine discharge is a function of best efficiency point discharge, maximum allowable discharge (avoiding possible cavitation), current reservoir storage volume, forecast inflow volume, electricity price, production cost, the number of units online.
- Reservoir storage volume is a function of inflow, turbine discharge, spillway discharge, evaporation, and seepage (Kerr only, no seepage at Pensacola in RiverWare).
- Other parameter dependencies have been discussed in the description of the input data preparation in **Section 4.2**.

The Operations Model is driven by VBA code to do two things: 1) solve an iterative loop for the net head values, and 2) step through the time series one day at a time. The Excel spreadsheets contain formulas to optimize the hydroelectric operations for a 24-hour period. The VBA code copies the formulas down from one day to the next as each 24-hour period is solved, preserving the solution values. In this way, the Excel spreadsheets are kept to a manageable size and overall calculation speed is improved.

At the beginning of the solution for a given 24-hour period, an estimated value for net head at each hourly time step is assumed (final values from one day are copied down to the next day to provide the first estimated value). The net head is used to calculate various parameters related to the turbine and spillway discharge, which in turn are used to calculate the TW elevation and headloss, which are then used to calculate the next estimated value for net head.

As each 24-hour period is solved, the VBA code copies the formulas down to the next day, preserving the values only (not the formulas) for the day that was just solved to reduce file size.

Each scenario model is solved first for Pensacola. The resulting total discharge (turbines plus spillway) from Pensacola is then hydrologically routed downstream to Kerr Dam in a manner consistent with the RiverWare hydrologic routing. The routed Pensacola Dam discharge for the given scenario, plus tributary inflows to Lake Hudson, are then combined and copied as inflow to the operations model for Kerr.

Hourly time series data produced in the operations model includes reservoir elevation, turbine discharge, spillway discharge, net head, power (scheduled day-ahead, real-time buy-back, real-time scheduled, and total), and revenue (day-ahead sales, buy-back cost, real-time sales, and total).

5. Validation

Model variables that will be used to validate performance of the Operations Model and Flood Routing Model against the RiverWare model output include total discharge from a reservoir and elevation of a reservoir. Reservoir storage and balance level are also available as validation parameters, but are simple corollaries for elevation. Because elevation is a more intuitive parameter for understanding the system state, it is proposed rather than the other corresponding parameters.

The date range for Operations Model validation will be April 1, 2004 to December 31, 2017. This is the overlapping date range for which data is available from the RiverWare model and when hourly data is available for the Operations Model. The Flood Routing Model may be validated against the RiverWare model using results as far back as 1940.

Performance metrics will include the Coefficient of Determination (R^2) and the Nash-Sutcliffe Efficiency (NSE). R^2 is an index of the degree of linear relationship between source and simulated data. R^2 predicts correlation between models and dispersion of data relative to that correlation. It does not evaluate accuracy, only correlation. NSE is an index of how well the source versus simulated data fits a perfect 1:1 correlation slope line. Plotting on a 1:1 line indicates consistent prediction at lower and higher values. However, NSE is more sensitive to extreme values. Formulas for R^2 and NSE are available in literature and given below for reference. The optimal value for both metrics is 1. For R^2 , the optimal trendline intercept is 0,0 and the optimal trendline slope is 1. **Table 1** lists qualitative ranges for evaluating model validation using these metrics (Moriassi, Gitau, Pai, & Daggupati, 2015).

$$R^2 = \left[\frac{\sum_{i=1}^n (O_i - \bar{O})(P_i - \bar{P})}{\sqrt{\sum_{i=1}^n (O_i - \bar{O})^2} \sqrt{\sum_{i=1}^n (P_i - \bar{P})^2}} \right]^2 \quad \text{NSE} = 1 - \frac{\sum_{i=1}^n (O_i - P_i)^2}{\sum_{i=1}^n (O_i - \bar{O})^2}$$

TABLE 1. SUMMARY OF PERFORMANCE METRICS

Metric	Range	Not Satisfactory	Satisfactory	Good	Very Good
R^2	0 to 1	≤ 0.60	0.60 to ≤ 0.75	0.75 to ≤ 0.85	> 0.85
NSE	$-\infty$ to 1	≤ 0.50	0.50 to ≤ 0.70	0.70 to ≤ 0.80	> 0.80

Validation of the Operations Model against the RiverWare model output will be performed using similar inputs as the RiverWare model for historical discharge, evaporation, seepage, stage-storage-area tables, reservoir operating level tables, maximum regulated spill tables, induced surcharge tables, seasonal Project target reservoir elevation table, and hydrologic routing coefficient tables. Following validation, some or all of these inputs and the associated flood routing methods may be updated and expanded to meet the needs of the study.

6. Summary

Mead & Hunt is developing a three reservoir version of the RiverWare model, referred to as the Flood Routing Model, to investigate operating alternatives and hypothetical (non-historical) flood events. The Flood Routing Model includes Pensacola, Kerr, and Fort Gibson Dams. Mead & Hunt is also developing an Operations Model to compute hourly hydropower scheduling, generation, and revenue at Pensacola and Kerr. The FERC SPD recommends GRDA demonstrate it has validated its model results against the RiverWare model output. The validation will compare the Flood Routing Model and Operations Model results against the RiverWare model output using R^2 and NSE correlation metrics. This report documents the development of the input data for the Operations Model that will be presented at the FERC-recommended conference call.

7. References

- Bertrand, A. (2009). *Electrical and Mechanical Calculations Characteristics of Generators 1, 2, 3, and 4*. Alstom Power & Transport Canada Inc. (Rev. July 7, 2014).
- CADSWES. (2020). *RiverWare Technical Documentation Version 8.1*. University of Colorado Boulder.
- CFR. (1944). *Regulations for use of storage waters*. 33 U.S. Code § 709.
- CFR. (1945). *Pensacola Dam and Reservoir, Grand (Neosho) River, Okla.* 33 CFR § 208.25.
- Dewberry. (2011). *USGS Grand Lake, OK LiDAR Project*. Prepared for the U.S. Geological Survey.
- EEC. (1962a). *Full-Size Turbine Power and Discharge Predicted from Model Tests, Markham Ferry*. The English Electric Company Limited, Hydraulics Research Laboratory, Water Turbine Department, Rugby. Figure 12. March 1962.
- EEC. (1962b). *Variation of Predicted Turbine Output with Tail Water Elevation, Markham Ferry*. The English Electric Company Limited, Hydraulics Research Laboratory, Water Turbine Department, Rugby. Figure 23. October 1962.
- GRDA. (1961). *As-Built Drawings. Dam and Power House, Power House and Intake, Transverse Sections, Markham Ferry Project*.
- GRDA. (1987). *Drawings. Dam and Powerhouse Section and Elevation of Dam and Powerhouse, Pensacola Dam Hydropower Project. Application for FERC License, FERC No. 1494-169, Exhibit F, Sheet 2*.
- Hunter, S. L., Trevisan, A. R., Villa, J., & Smith, K. A. (2020). *Bathymetric Map, Surface Area, and Capacity of Grand Lake O' the Cherokees, Northeastern Oklahoma, 2019*. Denver: USGS.
- Moriasi, D. N., Gitau, M. W., Pai, N., & Daggupati, P. (2015). Hydrologic and Water Quality Models: Performance Measures and Evaluation Criteria. *Transactions of the American Society of Agricultural and Biological Engineers*, Vol. 58(6): 1763-1785.
- OAC. (2013). *Title 785. Oklahoma Water Resources Board. Chapter 45. Oklahoma's Water Quality Standards*. Oklahoma Administrative Code. OAC 785.45-5-12. July 1, 2013.
- Siemens. (1999). *Efficiency Calculations, Pensacola Power Plant, Unit No. 3*. Siemens Westinghouse Generator Engineering. Page V of V. January 13, 1999.
- Steffen, J., Stringer, J., Daylor, J., Neumann, D., & Zagona, E. (2015). TAPER - A Real-Time Decision Support Tool for Balanced Flood Operation of the Arkansas River in Tulsa District. *3rd Joint Federal Interagency Conference on Sedimentation and Hydrologic Modeling*. Reno, Nevada.
- U.S. Army Corps of Engineers. (1980). *Arkansas River Basin Water Control Master Manual*. Tulsa and Little Rock Districts.

- U.S. Army Corps of Engineers. (1987). *Hydraulic Design Criteria*.
- U.S. Army Corps of Engineers. (1990). *Discharge Rating Curves, Main Spillway. Discharge Rating Curves, East Spillway. Pensacola Reservoir*. Dept. of the Army, Tulsa District Corps of Engineers.
- U.S. Army Corps of Engineers. (1991). *Spillway Rating Curves, Partial and Full Gate Openings. Markham Ferry Reservoir*. Department of the Army, Tulsa District.
- U.S. Army Corps of Engineers. (2020). *RiverWare Model for the Arkansas Basin Reservoir System*.
- Voith. (1997). *Expected Prototype Turbine Performance, Pensacola, Speed = 150 rpm, Centerline Elevation = 630 ft*. Voith Hydro Inc. York, PA. Drawing No. 2677-0146. Figure No. 5.1.3. October, 1997.
- Walsh, J. (1999). *Pensacola Power Plant Performance Test on Unit 3 (Preliminary)*. Accusonic Technologies. Falmouth, MA. Report FP-27108B. Figure 2. December 15, 1999.

Appendix A. USACE RiverWare Data

USACE SWT RiverWare Period-of-Record Model, Daily Time Series Data																	
Element	PARS	PARS-COMM	PARS-COMM	COMM	COMM-PENS	COMM-PENS	PENS	PENS	PENS	PENS	PENS	PENS	PENS-HUDS	PENS-HUDS	HUDS	HUDS	
Parameter	FLOW-LOC CUM	INFLOW	OUTFLOW	FLOW-LOC CUM	INFLOW	OUTFLOW	ELEV	STORAGE	FLOOD-STORAGE	FLOW-RES IN	OPLEVEL	FLOW-RES OUT	INFLOW	OUTFLOW	ELEV	FLOOD-STORAGE	
Units	cfs	cfs	cfs	cfs	cfs	cfs	ft	acre-ft	acre-ft	cfs	-	cfs	cfs	cfs	ft	acre-ft	
1	01Jan1940	50	50	50	51	51	51	742.00	1392694	16	262	8.00001	238	238	238	619.02	263
2	02Jan1940	50	50	50	53	53	52	742.00	1392686	8	81	7.07267	69	69	69	619.01	54
3	03Jan1940	50	50	50	52	52	53	742.00	1392682	4	134	6.08950	120	120	120	619.00	0
4	04Jan1940	50	50	50	54	54	53	742.00	1392681	3	347	5.84333	331	331	331	619.00	0
5	05Jan1940	50	50	50	56	56	55	742.00	1392682	4	280	6.17988	264	264	264	619.04	462
6	06Jan1940	50	50	50	54	54	55	742.00	1392682	4	252	6.19854	235	235	235	619.01	141
7	07Jan1940	50	50	50	55	55	55	742.00	1392682	4	261	6.03920	245	245	245	619.01	135
8	08Jan1940	50	50	50	50	50	52	742.00	1392681	3	297	5.64767	282	282	282	619.00	34
9	09Jan1940	51	51	51	51	51	50	742.00	1392680	2	393	5.57045	377	377	377	619.02	229
10	10Jan1940	51	51	51	51	51	51	742.00	1392681	3	367	5.63389	351	351	351	619.02	189
11	11Jan1940	50	50	50	50	50	51	742.00	1392682	4	372	6.08029	356	356	356	619.02	225
12	12Jan1940	50	50	50	51	51	51	742.00	1392682	4	372	6.03123	356	356	356	619.01	128
13	13Jan1940	50	50	50	51	51	51	742.00	1392682	4	433	6.08367	417	417	417	619.02	249
14	14Jan1940	50	50	50	57	57	55	742.00	1392683	5	434	6.32674	418	418	418	619.03	307
15	15Jan1940	50	50	50	53	53	55	742.00	1392683	5	325	6.31415	308	308	308	619.01	128
16	16Jan1940	50	50	50	50	50	51	742.00	1392682	4	396	6.01742	381	381	381	619.02	166
17	17Jan1940	50	50	50	51	51	51	742.00	1392681	3	420	5.97649	405	405	405	619.03	313
18	18Jan1940	50	50	50	52	52	51	742.00	1392682	4	318	6.33774	302	302	302	619.02	213
19	19Jan1940	50	50	50	50	50	51	742.00	1392683	5	302	6.57443	286	286	286	619.02	168
20	20Jan1940	50	50	50	50	50	50	742.00	1392682	4	325	6.26857	309	309	309	619.02	229
21	21Jan1940	50	50	50	50	50	50	742.00	1392682	4	296	6.24674	280	280	280	619.02	192
22	22Jan1940	50	50	50	50	50	50	742.00	1392682	4	292	6.34733	275	275	275	619.02	189
23	23Jan1940	50	50	50	50	50	50	742.00	1392683	5	288	6.51573	271	271	271	619.02	186
24	24Jan1940	50	50	50	50	50	50	742.00	1392683	5	274	6.49099	257	257	257	619.01	146
25	25Jan1940	50	50	50	50	50	50	742.00	1392683	5	284	6.57288	268	268	268	619.01	125
26	26Jan1940	50	50	50	50	50	50	742.00	1392683	5	300	6.62145	284	284	284	619.01	150
27	27Jan1940	50	50	50	50	50	50	742.00	1392683	5	291	6.47114	275	275	275	619.01	120
28	28Jan1940	50	50	50	50	50	50	742.00	1392682	4	320	6.17769	305	305	305	619.02	172
29	29Jan1940	50	50	50	50	50	50	742.00	1392682	4	299	6.01550	283	283	283	619.01	104
30	30Jan1940	50	50	50	50	50	50	742.00	1392681	3	362	5.91130	347	347	347	619.02	221
31	31Jan1940	50	50	50	50	50	50	742.00	1392682	4	346	6.09173	330	330	330	619.02	221
32	01Feb1940	50	50	50	50	50	50	742.00	1392682	4	424	6.18151	458	458	458	619.04	470
33	02Feb1940	50	50	50	51	51	50	742.00	1392683	5	393	6.47594	426	426	426	619.04	457
34	03Feb1940	50	50	50	52	52	52	742.00	1392683	5	399	6.58737	433	433	433	619.05	510
35	04Feb1940	50	50	50	54	54	53	742.00	1392683	5	363	6.46727	397	397	397	619.04	398
36	05Feb1940	60	60	53	53	53	54	742.00	1392681	3	416	5.68030	452	452	452	619.04	411
37	06Feb1940	63	63	59	59	59	57	742.00	1392680	2	400	5.54077	435	435	435	619.04	401
38	07Feb1940	55	55	59	59	59	59	742.00	1392680	2	306	5.49845	341	341	341	619.02	200
39	08Feb1940	68	68	61	64	64	62	742.00	1392680	2	329	5.53507	363	363	363	619.02	226
40	09Feb1940	72	72	67	69	69	67	742.00	1392680	2	380	5.48346	415	415	415	619.04	441
41	10Feb1940	63	63	68	73	73	72	742.00	1392680	2	331	5.52878	366	366	366	619.02	236
42	11Feb1940	59	59	63	73	73	73	742.00	1392680	2	393	5.54404	428	428	428	619.03	357
43	12Feb1940	52	52	57	67	67	70	742.00	1392680	2	362	5.44471	397	397	397	619.03	368
44	13Feb1940	50	50	53	62	62	64	742.00	1392680	2	297	5.56904	331	331	331	619.03	306
45	14Feb1940	50	50	51	56	56	59	742.00	1392680	2	286	5.72258	320	320	320	619.02	194
46	15Feb1940	50	50	50	57	57	57	742.00	1392681	3	321	6.03727	355	355	355	619.02	203
47	16Feb1940	50	50	50	80	80	71	742.00	1392682	4	355	6.19091	389	389	389	619.03	325
48	17Feb1940	50	50	50	194	194	149	742.00	1392681	3	357	5.82935	392	392	392	619.03	313
49	18Feb1940	57	57	53	190	190	192	742.00	1392679	1	437	5.19429	473	473	473	619.06	597
50	19Feb1940	60	60	57	125	125	151	742.00	1392679	1	377	5.31640	412	412	412	619.04	380
51	20Feb1940	57	57	58	109	109	115	742.00	1392679	1	488	5.19398	523	523	523	619.04	451
52	21Feb1940	50	50	55	99	99	103	742.00	1392680	2	508	5.55060	526	526	526	619.05	512
53	22Feb1940	50	50	51	91	91	94	742.00	1392680	2	491	5.47451	526	526	526	619.04	484
54	23Feb1940	51	51	51	80	80	84	742.00	1392679	1	418	5.19442	454	454	454	619.04	399
55	24Feb1940	52	52	51	86	86	83	742.00	1392679	1	412	5.34691	446	446	446	619.03	348
56	25Feb1940	59	59	54	74	74	79	742.00	1392680	2	423	5.55188	457	457	457	619.02	234
57	26Feb1940	68	68	61	64	64	68	742.00	1392679	1	488	5.19397	524	524	524	619.04	431
58	27Feb1940	50	50	60	80	80	73	742.00	1392681	3	454	5.83498	488	488	488	619.04	466
59	28Feb1940	50	50	53	86	86	83	742.00	1392681	3	412	5.70285	447	447	447	619.04	393
...
28435	06Nov2017	155	155	165	179	179	188	742.00	1392679	1	566	5.20849	537	537	537	619.00	0
28436	07Nov2017	148	148	155	175	175	177	742.00	1392679	1	565	5.20675	453	453	453	619.03	367
28437	08Nov2017	126	126	142	164	164	169	742.01	1393189	511	564	8.00827	195	195	195	619.00	0
28438	09Nov2017	112	112	126	153	153	158	742.00	1392679	1	464	5.21000	610	610	610	619.08	869
28439	10Nov2017	117	117	118	132	132	141	742.00	1392679	1	464	5.20465	352	352	352	619.02	173
28440	11Nov2017	117	117	117	127	127	129	742.00	1392679	1	464	5.20465	352	352	352	619.02	170
28441	12Nov2017	126	126	120	129	129	128	742.00	1392679	1	464	5.20465	352	352	352	619.02	220
28442	13Nov2017	122	122	123	133	133	131	742.00	1392679	1	414	5.20361	302	302	302	619.00	0
28443	14Nov2017	128	128	124	132	132	132	742.00	1392679	1	764	5.21088	602	602	602	619.02	171
28444	15Nov2017	136	136	130	134	134	133	742.00	1392679	1	1064	5.21711	952	952	952	619.00	0
28445	16Nov2017	133	133	133	149	149	143	742.00	1392679	1	664	5.20881	552	552	552	619.08	936
28446	17Nov2017	122	122	129	132	132	139	742.00	1392679	1	564	5.20673	452	452	452	619.00	0
28447	18Nov2017	137	137	129	129	129	130	742.00	1392679	1	467	5.20472	355	355	355	619.06	648
28448	19Nov2017	126	126	131	131	131	130	742.00	1392679	1	466	5.20470	354	354	354	619.03	266
28449	20Nov2017	114	114	123	123	123	126	742.00	1392679	1	465	5.20467	353	353			

USACE SWT RiverWare Period-of-Record Model, Daily Time Series Data																	
Element		HUDS	HUDS	HUDS	HUDS-FGIB	HUDS-FGIB	FGIB	FGIB	FGIB	FGIB	FGIB	FT GIBSON-MUSKOGEE	FT GIBSON-MUSKOGEE	PENS	HUDS	FGIB	Van Buren
Parameter		FLOW-RES IN	OPLEVEL	OUTFLOW	INFLOW	OUTFLOW	ELEV	FLOOD-STORAGE	FLOW-RES IN	FLOW-RES OUT	OP-LEVEL	INFLOW	OUTFLOW	EVAP	EVAP	EVAP	Percent Full Regulation Parameter
Units		cfs	-	cfs	cfs	cfs	ft	acre-ft	cfs	cfs	-	cfs	cfs	in/day	in/day	in/day	-
1	01Jan1940	238	8.01077	91	91	91	554.00	67	91	0	8.00075	0	0	0.0094	0.0087	0.0232	0.000
2	02Jan1940	69	8.00222	160	160	160	553.98	0	160	368	4.90163	368	276	0.0094	0.0087	0.0232	0.000
3	03Jan1940	145	5.41351	158	158	158	553.98	0	158	91	4.90570	91	161	0.0094	0.0087	0.0232	0.000
4	04Jan1940	365	5.21055	351	351	351	554.01	140	351	0	8.00157	0	23	0.0094	0.0087	0.0232	0.000
5	05Jan1940	264	8.01894	17	17	17	554.00	60	17	0	8.00067	0	0	0.0094	0.0087	0.0232	0.000
6	06Jan1940	244	8.00576	392	392	392	554.03	497	392	114	8.00558	114	86	0.0094	0.0087	0.0232	0.000
7	07Jan1940	245	8.00553	234	234	234	553.99	0	234	486	4.97502	486	393	0.0094	0.0087	0.0232	0.000
8	08Jan1940	312	8.00138	349	349	349	554.01	123	349	171	8.00138	171	250	0.0094	0.0087	0.0232	0.000
9	09Jan1940	434	8.00939	321	321	321	554.02	397	321	126	8.00445	126	137	0.0094	0.0087	0.0232	0.000
10	10Jan1940	407	8.00776	413	413	413	553.99	0	413	670	4.95146	670	534	0.0094	0.0087	0.0232	0.000
11	11Jan1940	432	8.00924	400	400	400	554.01	260	400	97	8.00292	97	240	0.0094	0.0087	0.0232	0.000
12	12Jan1940	370	8.00526	405	405	405	553.99	0	405	548	4.97057	548	435	0.0094	0.0087	0.0232	0.000
13	13Jan1940	494	8.01020	419	419	419	554.02	335	419	123	8.00376	123	229	0.0094	0.0087	0.0232	0.000
14	14Jan1940	443	8.01260	399	399	399	553.98	0	399	680	4.92797	680	541	0.0094	0.0087	0.0232	0.000
15	15Jan1940	308	8.00524	385	385	385	554.00	0	385	167	4.99589	167	296	0.0094	0.0087	0.0232	0.000
16	16Jan1940	424	8.00679	390	390	390	553.87	0	390	1541	4.48341	1541	1197	0.0094	0.0087	0.0232	0.000
17	17Jan1940	455	8.01282	367	367	367	553.90	0	367	0	4.61478	0	385	0.0094	0.0087	0.0232	0.000
18	18Jan1940	302	8.00873	338	338	338	553.93	0	338	0	4.73378	0	0	0.0094	0.0087	0.0232	0.000
19	19Jan1940	286	8.00691	294	294	294	553.96	0	294	0	4.83413	0	0	0.0094	0.0087	0.0232	0.000
20	20Jan1940	309	8.00939	265	265	265	553.97	0	265	67	4.89346	67	50	0.0094	0.0087	0.0232	0.000
21	21Jan1940	280	8.00785	285	285	285	553.99	0	285	96	4.94909	96	89	0.0094	0.0087	0.0232	0.000
22	22Jan1940	275	8.00777	262	262	262	554.00	0	262	118	4.98610	118	112	0.0094	0.0087	0.0232	0.000
23	23Jan1940	277	8.00764	265	265	265	554.01	86	265	131	8.00097	131	128	0.0094	0.0087	0.0232	0.000
24	24Jan1940	269	8.00598	275	275	275	554.02	306	275	107	8.00343	107	113	0.0094	0.0087	0.0232	0.000
25	25Jan1940	291	8.00511	287	287	287	553.99	0	287	460	4.96792	460	372	0.0094	0.0087	0.0232	0.000
26	26Jan1940	310	8.00616	283	283	283	554.00	33	283	133	8.00037	133	215	0.0094	0.0087	0.0232	0.000
27	27Jan1940	294	8.00493	295	295	295	554.01	205	295	151	8.00230	151	146	0.0094	0.0087	0.0232	0.000
28	28Jan1940	329	8.00707	289	289	289	554.02	414	289	126	8.00464	126	132	0.0094	0.0087	0.0232	0.000
29	29Jan1940	293	8.00425	314	314	314	553.99	0	314	518	4.97749	518	420	0.0094	0.0087	0.0232	0.000
30	30Jan1940	404	8.00905	331	331	331	554.01	254	331	92	8.00285	92	199	0.0094	0.0087	0.0232	0.000
31	31Jan1940	454	8.00906	440	440	440	553.73	0	440	3031	3.93044	3031	2296	0.0094	0.0087	0.0232	0.000
32	01Feb1940	609	8.01927	497	497	497	553.79	0	507	0	4.14142	0	758	-0.0207	-0.0507	-0.0376	0.000
33	02Feb1940	604	8.01875	624	624	624	553.85	0	646	0	4.41167	0	0	-0.0207	-0.0507	-0.0376	0.000
34	03Feb1940	615	8.02089	602	602	602	553.92	0	648	0	4.68285	0	0	-0.0207	-0.0507	-0.0376	0.000
35	04Feb1940	577	8.01631	647	647	647	553.99	0	647	0	4.95357	0	0	-0.0207	-0.0507	-0.0376	0.000
36	05Feb1940	576	8.01686	582	582	582	554.04	745	582	89	8.00835	89	66	-0.0207	-0.0507	-0.0376	0.000
37	06Feb1940	499	8.01644	517	517	517	553.98	0	517	1105	4.90614	1105	851	-0.0207	-0.0507	-0.0376	0.000
38	07Feb1940	374	8.00821	489	489	489	554.02	309	489	102	8.00347	102	353	-0.0207	-0.0507	-0.0376	0.000
39	08Feb1940	430	8.00927	430	430	430	553.99	0	430	710	4.94358	710	558	-0.0207	-0.0507	-0.0376	0.000
40	09Feb1940	549	8.01810	454	454	454	554.03	540	454	40	8.00606	40	207	-0.0207	-0.0507	-0.0376	0.000
41	10Feb1940	444	8.00969	561	561	561	553.99	0	561	963	4.94139	963	732	-0.0207	-0.0507	-0.0376	0.000
42	11Feb1940	507	8.01465	460	460	460	554.02	447	460	88	8.00501	88	306	-0.0207	-0.0507	-0.0376	0.000
43	12Feb1940	469	8.01507	477	477	477	553.68	0	477	3673	3.73568	3673	2777	-0.0207	-0.0507	-0.0376	0.000
44	13Feb1940	418	8.01257	462	462	462	553.73	0	466	0	3.92962	0	918	-0.0207	-0.0507	-0.0376	0.000
45	14Feb1940	362	8.00794	432	432	432	553.78	0	432	0	4.10903	0	0	-0.0207	-0.0507	-0.0376	0.000
46	15Feb1940	394	8.00833	403	403	403	553.82	0	403	0	4.27613	0	0	-0.0207	-0.0507	-0.0376	0.000
47	16Feb1940	499	8.01333	451	451	451	553.86	0	451	0	4.46341	0	0	-0.0207	-0.0507	-0.0376	0.000
48	17Feb1940	538	8.01285	557	557	557	553.93	0	610	0	4.71835	0	0	-0.0207	-0.0507	-0.0376	0.000
49	18Feb1940	738	8.02447	609	609	609	554.01	163	755	0	8.00182	0	0	-0.0207	-0.0507	-0.0376	0.000
50	19Feb1940	621	8.01559	744	744	744	553.98	0	818	1102	4.91057	1102	826	-0.0207	-0.0507	-0.0376	0.000
51	20Feb1940	683	8.01851	660	660	660	554.04	758	694	92	8.00850	92	345	-0.0207	-0.0507	-0.0376	0.000
52	21Feb1940	715	8.02101	697	697	697	553.97	0	697	1348	4.88231	1348	1034	-0.0207	-0.0507	-0.0376	0.000
53	22Feb1940	642	8.01983	670	670	670	553.64	0	694	3790	3.56475	3790	3180	-0.0207	-0.0507	-0.0376	0.000
54	23Feb1940	579	8.01635	635	635	635	553.71	0	684	0	3.85093	0	948	-0.0207	-0.0507	-0.0376	0.000
55	24Feb1940	546	8.01426	586	586	586	553.77	0	591	0	4.09763	0	0	-0.0207	-0.0507	-0.0376	0.000
56	25Feb1940	510	8.00958	581	581	581	553.84	0	581	0	4.34035	0	0	-0.0207	-0.0507	-0.0376	0.000
57	26Feb1940	629	8.01765	544	544	544	553.89	0	546	0	4.56819	0	0	-0.0207	-0.0507	-0.0376	0.000
58	27Feb1940	623	8.01911	618	618	618	553.96	0	629	20	4.82258	20	15	-0.0207	-0.0507	-0.0376	0.000
59	28Feb1940	562	8.01611	612	612	612	554.02	324	678	88	8.00363	88	71	-0.0207	-0.0507	-0.0376	0.000
...
28435	06Nov2017	1968	8.00000	1939	1939	1939	554.05	1027	2184	2907	8.01152	2907	2203	0.0665	0.0399	0.0782	0.000
28436	07Nov2017	615	8.01503	402	402	402	554.01	163	402	736	8.00183	736	1279	0.0665	0.0399	0.0782	0.000
28437	08Nov2017	822	8.00000	978	978	978	554.11	2133	1183	89	8.02392	89	250	0.0665	0.0399	0.0782	0.000
28438	09Nov2017	610	8.03564	143	143	143	554.00	0	143	1136	4.99200	1136	874	0.0665	0.0399	0.0782	0.000
28439	10Nov2017	402	8.00709	725	725	725	554.05	861	725	170	8.00965	170	412	0.0665	0.0399	0.0782	0.000
28440	11Nov2017	402	8.00695	375	375	375	554.01	202	375	606	8.00227	606	497	0.0665	0.0399	0.0782	0.000
28441	12Nov2017	402	8.00903	348	348	348	554.02	430	348	132	8.00482	132	250	0.0665	0.0399	0.0782	0.000
28442	13Nov2017	352	8.00000	435	435	435	554.03	638	435	228	8.00715	228	204	0.0665	0.0399	0.0782	0.000
28443	14Nov2017	852	8.00700	738	738	738	554.00	40	988	1188	8.00045	1188	948	0.0665	0.0399	0.0782	0.000
28444	15Nov2017	2094	8.00000	2152	2152	2152	554.17	3288	2152	41							

USACE SWT RiverWare Period-of-Record Model, Daily Time Series Data																			
Element	El Dorado	Kaw	Keystone	Birch	Skiatook	Hulah	Copan	Toronto	Fall River	Elk City	Big Hill	Oologah	Marion	Council Grove	John Redmond	Tenkiler	Eufaula	Wister	
Parameter	Operating Level	Operating Level	Operating Level	Operating Level	Operating Level	Operating Level	Operating Level	Operating Level	Operating Level	Operating Level	Operating Level	Operating Level	Operating Level	Operating Level	Operating Level	Operating Level	Operating Level	Operating Level	
Units	-	-	-	-	-	-	-	-	-	-	-	-	-	-	-	-	-	-	
1	01Jan1940	5	5	5	5	4.99901	5	5	5	5	5	5	4.99	5	5	5	5	5	5
2	02Jan1940	5	5	5	5	4.99803	4.99	5	4.99	5	4.99	5	4.98	5	5	4.99	4.98	4.98	4.98
3	03Jan1940	5	5	4.98	5	4.99706	4.99	4.99	4.99	4.99	4.99	5	4.98	5	5	4.99	4.98	4.98	4.99
4	04Jan1940	5	5	4.96	4.99	4.99609	4.99	4.99	4.99	4.99	4.98	5	4.97	5	5	4.99	4.96	4.95	4.99
5	05Jan1940	5	5	4.96	4.99	4.99512	4.99	4.99	4.98	4.99	4.98	5	4.97	5	5	4.99	4.96	4.95	4.99
6	06Jan1940	5	5	4.96	4.99	4.99414	4.98	4.99	4.98	4.99	4.98	5	4.97	5	5	4.99	4.96	4.95	4.99
7	07Jan1940	5	5	4.96	4.99	4.99317	4.98	4.99	4.98	4.98	4.97	5	4.97	5	5	4.98	4.96	4.95	4.98
8	08Jan1940	5	5	4.96	4.99	4.99221	4.98	4.99	4.98	4.98	4.97	5	4.96	5	5	4.98	4.97	4.95	4.98
9	09Jan1940	5	5	4.94	4.99	4.99123	4.97	4.98	4.97	4.98	4.96	5	4.96	4.99	5	4.98	4.94	4.93	4.98
10	10Jan1940	4.99	5	4.94	4.98	4.99026	4.97	4.98	4.97	4.98	4.96	5	4.96	4.99	4.99	4.98	4.95	4.93	4.98
11	11Jan1940	4.99	5	4.94	4.98	4.98933	4.97	4.98	4.97	4.97	4.95	5	4.95	4.99	4.99	4.98	4.92	4.91	4.98
12	12Jan1940	4.99	5	4.94	4.98	4.98833	4.97	4.98	4.96	4.97	4.95	5	4.95	4.99	4.99	4.98	4.9	4.91	4.97
13	13Jan1940	4.99	5	4.94	4.98	4.98736	4.96	4.98	4.96	4.97	4.95	5	4.95	4.99	4.99	4.98	4.9	4.91	4.97
14	14Jan1940	4.99	5	4.94	4.98	4.98639	4.96	4.98	4.96	4.97	4.94	4.99	4.95	4.99	4.99	4.98	4.91	4.91	4.97
15	15Jan1940	4.99	5	4.94	4.98	4.98542	4.96	4.97	4.95	4.96	4.94	4.99	4.94	4.99	4.99	4.97	4.91	4.91	4.97
16	16Jan1940	4.99	5	4.94	4.97	4.98445	4.96	4.97	4.95	4.96	4.93	4.99	4.94	4.99	4.99	4.97	4.91	4.89	4.97
17	17Jan1940	4.99	5	4.94	4.97	4.98348	4.95	4.97	4.95	4.96	4.93	4.99	4.94	4.99	4.99	4.97	4.91	4.89	4.97
18	18Jan1940	4.99	5	4.93	4.97	4.98251	4.95	4.97	4.94	4.96	4.93	4.99	4.93	4.99	4.99	4.97	4.89	4.86	4.96
19	19Jan1940	4.99	5	4.88	4.97	4.98154	4.95	4.97	4.94	4.95	4.92	4.99	4.93	4.99	4.99	4.97	4.87	4.86	4.96
20	20Jan1940	4.99	5	4.88	4.97	4.98057	4.94	4.97	4.94	4.95	4.92	4.99	4.92	4.99	4.99	4.97	4.87	4.86	4.96
21	21Jan1940	4.99	5	4.88	4.97	4.97960	4.94	4.96	4.94	4.95	4.91	4.99	4.92	4.99	4.99	4.96	4.87	4.86	4.96
22	22Jan1940	4.99	5	4.87	4.97	4.97863	4.94	4.96	4.93	4.95	4.91	4.99	4.92	4.99	4.99	4.96	4.87	4.86	4.95
23	23Jan1940	4.99	5	4.87	4.96	4.97766	4.94	4.96	4.93	4.94	4.91	4.99	4.92	4.99	4.99	4.96	4.88	4.86	4.95
24	24Jan1940	4.99	5	4.86	4.96	4.97669	4.93	4.96	4.93	4.94	4.9	4.99	4.91	4.99	4.99	4.96	4.85	4.84	4.95
25	25Jan1940	4.99	5	4.86	4.96	4.97572	4.93	4.96	4.92	4.94	4.9	4.99	4.91	4.98	4.99	4.96	4.83	4.82	4.95
26	26Jan1940	4.99	5	4.86	4.96	4.97475	4.93	4.96	4.92	4.94	4.89	4.99	4.91	4.98	4.99	4.96	4.83	4.82	4.95
27	27Jan1940	4.99	5	4.86	4.96	4.97377	4.92	4.96	4.92	4.93	4.89	4.99	4.9	4.98	4.99	4.95	4.83	4.82	4.94
28	28Jan1940	4.99	5	4.84	4.96	4.97280	4.92	4.95	4.91	4.93	4.88	4.99	4.9	4.98	4.99	4.95	4.84	4.82	4.94
29	29Jan1940	4.98	5	4.84	4.95	4.97183	4.92	4.95	4.91	4.93	4.88	4.99	4.9	4.98	4.99	4.95	4.81	4.8	4.94
30	30Jan1940	4.98	5	4.84	4.95	4.97086	4.92	4.95	4.91	4.93	4.88	4.99	4.9	4.98	4.98	4.95	4.82	4.8	4.94
31	31Jan1940	4.98	5	4.84	4.95	4.96989	4.91	4.95	4.91	4.92	4.87	4.99	4.9	4.98	4.98	4.95	4.82	4.8	4.93
32	01Feb1940	4.98	5	4.84	4.95	4.96893	4.91	4.95	4.9	4.92	4.87	4.99	4.9	4.98	4.98	4.95	4.8	4.79	4.93
33	02Feb1940	4.98	5	4.84	4.95	4.96796	4.91	4.95	4.9	4.92	4.86	4.99	4.89	4.98	4.98	4.94	4.8	4.79	4.93
34	03Feb1940	4.98	5	4.85	4.95	4.96699	4.91	4.95	4.9	4.92	4.86	4.99	4.89	4.98	4.98	4.94	4.8	4.79	4.93
35	04Feb1940	4.98	5	4.85	4.95	4.96602	4.91	4.95	4.89	4.91	4.86	4.99	4.89	4.98	4.98	4.94	4.8	4.79	4.93
36	05Feb1940	4.98	5	4.86	4.95	4.96505	4.91	4.94	4.89	4.91	4.85	4.99	4.88	4.98	4.98	4.94	4.8	4.79	4.93
37	06Feb1940	4.98	5	4.81	4.95	4.96408	4.9	4.94	4.89	4.91	4.85	4.99	4.88	4.98	4.98	4.94	4.8	4.77	4.93
38	07Feb1940	4.98	5	4.82	4.95	4.96311	4.9	4.94	4.88	4.91	4.85	4.99	4.88	4.98	4.98	4.93	4.78	4.77	4.94
39	08Feb1940	4.98	5	4.82	4.95	4.96214	4.9	4.94	4.88	4.9	4.84	4.99	4.88	4.98	4.98	4.93	4.78	4.75	4.95
40	09Feb1940	4.98	5	4.83	4.95	4.96117	4.9	4.94	4.88	4.9	4.84	4.99	4.88	4.98	4.98	4.93	4.78	4.75	4.95
41	10Feb1940	4.98	5	4.83	4.95	4.96020	4.9	4.94	4.87	4.9	4.83	4.99	4.88	4.98	4.98	4.93	4.78	4.75	4.96
42	11Feb1940	4.98	5	4.83	4.95	4.95923	4.89	4.94	4.87	4.89	4.83	4.99	4.88	4.98	4.98	4.93	4.78	4.75	4.97
43	12Feb1940	4.98	5	4.84	4.95	4.95826	4.89	4.94	4.87	4.89	4.83	4.99	4.88	4.98	4.98	4.93	4.78	4.75	4.98
44	13Feb1940	4.98	5	4.84	4.94	4.95729	4.89	4.94	4.86	4.89	4.82	4.99	4.88	4.98	4.98	4.93	4.76	4.75	4.98
45	14Feb1940	4.97	5	4.85	4.94	4.95632	4.89	4.94	4.86	4.89	4.82	4.99	4.87	4.97	4.98	4.93	4.76	4.75	4.99
46	15Feb1940	4.97	5	4.85	4.94	4.95535	4.89	4.94	4.86	4.88	4.82	4.99	4.87	4.97	4.98	4.93	4.76	4.75	5
47	16Feb1940	4.97	5	4.86	4.94	4.95438	4.89	4.94	4.86	4.88	4.81	4.99	4.86	4.97	4.98	4.93	4.74	4.73	5
48	17Feb1940	4.97	5	4.87	4.94	4.95341	4.88	4.94	4.85	4.88	4.81	4.99	4.86	4.97	4.98	4.93	4.74	4.73	5
49	18Feb1940	4.97	5	4.89	4.94	4.95244	4.88	4.94	4.85	4.88	4.81	4.99	4.86	4.97	4.98	4.93	4.75	4.73	5
50	19Feb1940	4.97	5	4.8	4.94	4.95147	4.88	4.94	4.85	4.87	4.8	4.99	4.86	4.97	4.98	4.93	4.75	4.73	8
51	20Feb1940	4.97	5	4.82	4.94	4.95050	4.88	4.93	4.85	4.87	4.8	4.99	4.86	4.97	4.98	4.93	4.75	4.72	8.01
52	21Feb1940	4.97	5	4.84	4.94	4.94953	4.88	4.93	4.84	4.87	4.79	4.99	4.86	4.97	4.98	4.93	4.73	4.72	8.01
53	22Feb1940	4.97	5	4.86	4.94	4.94856	4.88	4.93	4.84	4.87	4.79	4.99	4.86	4.97	4.98	4.93	4.73	4.72	8.01
54	23Feb1940	4.97	5	4.77	4.94	4.94759	4.87	4.93	4.84	4.86	4.79	4.99	4.86	4.97	4.98	4.93	4.74	4.72	8.01
55	24Feb1940	4.97	5	4.79	4.94	4.94662	4.87	4.93	4.84	4.86	4.78	4.99	4.86	4.97	4.98	4.93	4.74	4.72	8
56	25Feb1940	4.97	5	4.8	4.94	4.94565	4.87	4.93	4.84	4.86	4.78	4.98	4.86	4.97	4.98	4.93	4.74	4.73	5
57	26Feb1940	4.97	5	4.81	4.94	4.94468	4.87	4.93	4.83	4.86	4.78	4.98	4.85	4.97	4.98	4.93	4.75	4.73	5
58	27Feb1940	4.97	5	4.83	4.94	4.94371	4.87	4.93	4.83	4.85	4.77	4.98	4.85	4.97	4.97	4.93	4.73	4.73	5
59	28Feb1940	4.97	5	4.84	4.94	4.94274	4.87	4.93	4.82	4.85	4.77	4.98	4.85	4.97	4.97	4.93	4.73	4.73	5
...
28435	06Nov2017	4.82	7.05	7.05	4.95	4.99311	4.99	4.99	4.99	4.99	4.97	4.99	7.05	4.68	4.87	4.99	7.08	7.1	4.85
28436	07Nov2017	4.82	5	7	4.95	4.99232	4.99	4.99	4.98	4.99	4.97	4.99	5	4.68	4.87	4.99	5	7	4.85
28437	08Nov2017	4.82	5	7.03	4.94	4.99154	4.99	4.98	4.98	4.99	4.96	4.99	5	4.68	4.87	4.99	7	7	4.84
28438	09Nov2017	4.82	5	6.11	4.94	4.99072	4.99	4.98	4.98	4.98	4.96	4.99	5	4.68	4.87	4.99	5	7	4.84
28439	10Nov2017	4.82	5	5.09	4.94	4.98997	4.98	4.98	4.98	4.98	4.95	4.98	5	4.68	4.87	4.99	5	5	4.84
28440	11Nov2017	4.82	5	5.1	4.94	4.98920	4.98	4.98	4.98	4.98	4.95	4.9							

Pensacola

Elevation ft PD	Area acre	Storage acre-ft	Pensacola		Max		
			Elevation ft PD	OPLEVEL 1 - 16.1	Elevation ft PD	Regulated Spill cfs	Induced Surcharge cfs
612	0	0	612	1	612	0	0
613	1	0.3	705.5	2	633	0	0
614	6	3.5	705.5001	3	730	1	0
615	30	15	727.8	4	735	47200	0
616	36	48	742	5	740	84500	0
617	42	86	742.0001	6	742	117000	0
618	51	132	742.0002	7	745.01	190000	0
619	66	190	742.0003	8	745.5	204000	0
620	128	269	743.49	9	745.95	217000	0
621	144	406	746.52	10	748	278000	0
622	158	556	749.21	11	752.4	422000	0
623	174	722	751.66	12	754	484000	0
624	196	906	753.92	13	754.8	515000	13500
625	269	1126	755	14	754.85	518000	50000
626	298	1411	755.6	15	754.9	520800	100000
627	329	1724	757	16	754.95	523700	200000
628	365	2070	758	16.1	754.98	525400	300000
629	402	2453			754.99	526000	500000
630	471	2879			755	527000	525000
631	502	3366			756	557000	550000
632	529	3882			756.7	567200	567200
633	556	4425			757	614900	614900
634	587	4996			758	700000	700000
635	653	5601					
636	687	6270					
637	728	6977					
638	781	7731					
639	837	8539					
640	924	9408					
641	967	10354					
642	1007	11341					
643	1054	12371					
644	1105	13450					
645	1231	14594					
646	1328	15876					
647	1420	17250					
648	1531	18723					
649	1658	20317					
650	1863	22045					
651	1995	23978					
652	2118	26035					
653	2226	28209					
654	2335	30489					
655	2500	32884					
656	2608	35441					
657	2721	38105					
658	2834	40883					
659	2956	43776					
660	3137	46798					
661	3277	50008					
662	3407	53350					
663	3544	56826					
664	3699	60446					
665	3954	64239					
666	4160	68300					
667	4350	72556					
668	4537	77000					
669	4741	81636					
670	5029	86486					
671	5249	91629					
672	5459	96984					
673	5674	102550					
674	5896	108336					
675	6189	114350					
676	6454	120680					
677	6678	127249					
678	6904	134040					
679	7136	141059					
680	7442	148319					
681	7687	155888					
682	7934	163699					
683	8201	171765					
684	8484	180108					
685	8854	188752					
686	9195	197780					
687	9535	207146					
688	9860	216848					
689	10160	226859					
690	10533	237178					
691	10828	247869					
692	11112	258838					
693	11420	270099					
694	11747	281679					
695	12154	293602					

Hudson

Elevation ft M.S.L.	Area acre	Storage acre-ft	Hudson		Max		
			Elevation ft M.S.L.	OPLEVEL 1 - 16.1	Elevation ft M.S.L.	Regulated Spill cfs	Induced Surcharge cfs
558	0	0	558	1	558	0	0
559	1	1	618.5	2	599	29000	0
560	1.5	2	618.5	3	610	82800	0
561	2	3	618.5	4	619	220000	0
562	9	8	619	5	624	315000	0
563	22	23	619.001	6	630	449000	0
564	59	57	619.002	7	633	527500	0
565	74	127	619.003	8	635	583100	70000
566	80	204	621.16	9	635.43	594000	85000
567	93	290	625.12	10	635.77	606000	100000
568	119	395	628.65	11	635.94	611000	360000
569	184	535	631.81	12	635.99	612000	500000
570	221	745	634.66	13	636	613000	613000
571	240	975	636	14	645	884000	884000
572	262	1226	636.001	15	648	974333	974333
573	289	1501	645	16			
574	337	1807	648	16.1			
575	367	2164					
576	391	2543					
577	421	2948					
578	459	3388					
579	563	3876					
580	641	4492					
581	686	5156					
582	733	5865					
583	788	6624					
584	916	7450					
585	1040	8446					
586	1137	9530					
587	1251	10721					
588	1429	12066					
589	1807	13601					
590	2143	15618					
591	2399	17892					
592	2615	20396					
593	2860	23141					
594	3210	26121					
595	3515	29513					
596	3751	33157					
597	3987	37015					
598	4269	41153					
599	4693	45579					
600	5019	50470					
601	5238	55603					
602	5464	60952					
603	5690	66529					
604	6160	72390					
605	6525	78771					
606	6782	85426					
607	7033	92334					
608	7300	99500					
609	7717	106953					
610	8101	114904					
611	8366	123135					
612	8633	131636					
613	8905	140403					
614	9309	149470					
615	9687	159000					
616	9976	168833					
617	10277	178951					
618	10608	189382					
618.5	10819	194784					
619	11029	200185					
620	11210	211304					
621	11570	222694					
622	11930	234443					
623	12300	246558					
624	12670	259042					
625	13065	271909					
626	13460	285171					
627	13880	298841					
628	14300	312930					
629	14800	327480					
630	15300	342529					
631	15855	358106					
632	16410	374237					
633	16975	390929					
634	17540	408186					
635	18145	426027					
636	18750	444474					
637	19440	463568					
638	20130	483352					
639	20880	503856					
640	21630	525110					

Pensacola

Elevation ft PD	Area acre	Storage acre-ft	Elevation ft PD	OPLEVEL 1 - 16.1	Elevation ft PD	Max Regulated Spill cfs	Induced Surcharge cfs
696	12490	305932					
697	12813	318584					
698	13142	331561					
699	13487	344873					
700	13934	358558					
701	14259	372661					
702	14550	387069					
703	14846	401769					
704	15157	416769					
705	15584	432106					
706	15921	447863					
707	16263	463955					
708	16629	480402					
709	17016	497224					
710	17556	514468					
711	18036	532267					
712	18520	550554					
713	18986	569302					
714	19509	588551					
715	20190	608359					
716	20726	628825					
717	21262	649820					
718	21830	671364					
719	22478	693521					
720	23244	716333					
721	23859	739896					
722	24443	764054					
723	25007	788782					
724	25592	814081					
725	26354	840006					
726	26991	866684					
727	27655	894007					
728	28359	922021					
729	29035	950728					
730	29745	980096					
731	30386	1010168					
732	31052	1040888					
733	31788	1072304					
734	32607	1104503					
735	33530	1137530					
736	34275	1171445					
737	34989	1206086					
738	35760	1241453					
739	36638	1277662					
740	37788	1314761					
741	38918	1353101					
742	40021	1392678					
743	40636	1433025					
744	41221	1473920					
745	41779	1515412					
746	43551	1558073					
747	45323	1602507					
748	47095	1648714					
749	48867	1696692					
750	50639	1746443					
751	52411	1797965					
752	54184	1851261					
753	55956	1906328					
754	57728	1963167					
755	59300	2021679					
756	61100	2081877					
757	62950	2143900					
758	64800	2207773					

Hudson

Elevation ft M.S.L.	Area acre	Storage acre-ft	Elevation ft M.S.L.	OPLEVEL 1 - 16.1	Elevation ft M.S.L.	Max Regulated Spill cfs	Induced Surcharge cfs
641	22375	547111					
642	23120	569858					
643	23870	593352					
644	24620	617596					
645	25400	642605					
648	27910	722482					

Parsons-Commerce		
Routing Coefficients		
Lag Coeff		
1	0.353	
2	0.4568	
3	0.1344	
4	0.0395	
5	0.0116	
6	0.0034	
7	0.001	
8	0.0003	

Commerce-Pensacola		
Routing Coefficients		
Lag Coeff		
1	0.6	
2	0.4	

Pensacola-Hudson		
Routing Coefficients		
Lag Coeff		
1		1

Hudson-Ft Gibson		
Routing Coefficients		
Lag Coeff		
1		1

Appendix B. Operations Model Input Data

HEAD LOSS CALCULATIONS - 1 OF 6

Component	Pipe Size (ft)	Description	Reference for Headloss Estimation	Minor Losses			Total Headloss		
				Kv	A (ft ²)	L (ft)	Kq	Q (cfs)	hL (ft)
Trashrack	---	Trashrack losses neglected: very large area, low velocity	---	---	---	---	---	---	
Inlet	15x15	Standard sharp-edged inlet loss	---	0.50	225.00	---	1.54E-07	2505	0.96
Contraction: 15' sq. to 15' diam.	15	Area 1 = 225.0 ft ² ; Area 2 = 176.7 ft ² ; A2/A1 = 0.78	[USACE HDC 228 - 4]	0.07	176.71	---	3.49E-08	2505	0.22
42° bend	15	r = 75'; Assume r/D=5	[USACE HDC 228-1]	0.075	176.71	---	3.74E-08	2505	0.23
Butterfly Valve	15	15' Diameter Butterfly Valve	[USACE HDC 331-1]	0.34	176.71	---	1.68E-07	2505	1.06
Penstock Friction	15	194' +/- Total Length	Darcy-Weisbach	---	---	194	5.58E-08	2505	0.35
Totals:							4.50E-07	2505	2.82

Governing Equations:

$$H = Q^2 / (C^2 * A^2 * 2g)$$

$$Q = C * A * (2gH)^{1/2}$$

$$A = B * G_o$$

where:

$$H = K_v * V^2 / (2g)$$

$$Q = A * (2gH / K_v)^{1/2}$$

$$K_v = 1 / C^2$$

$$H = Q^2 * K_q$$

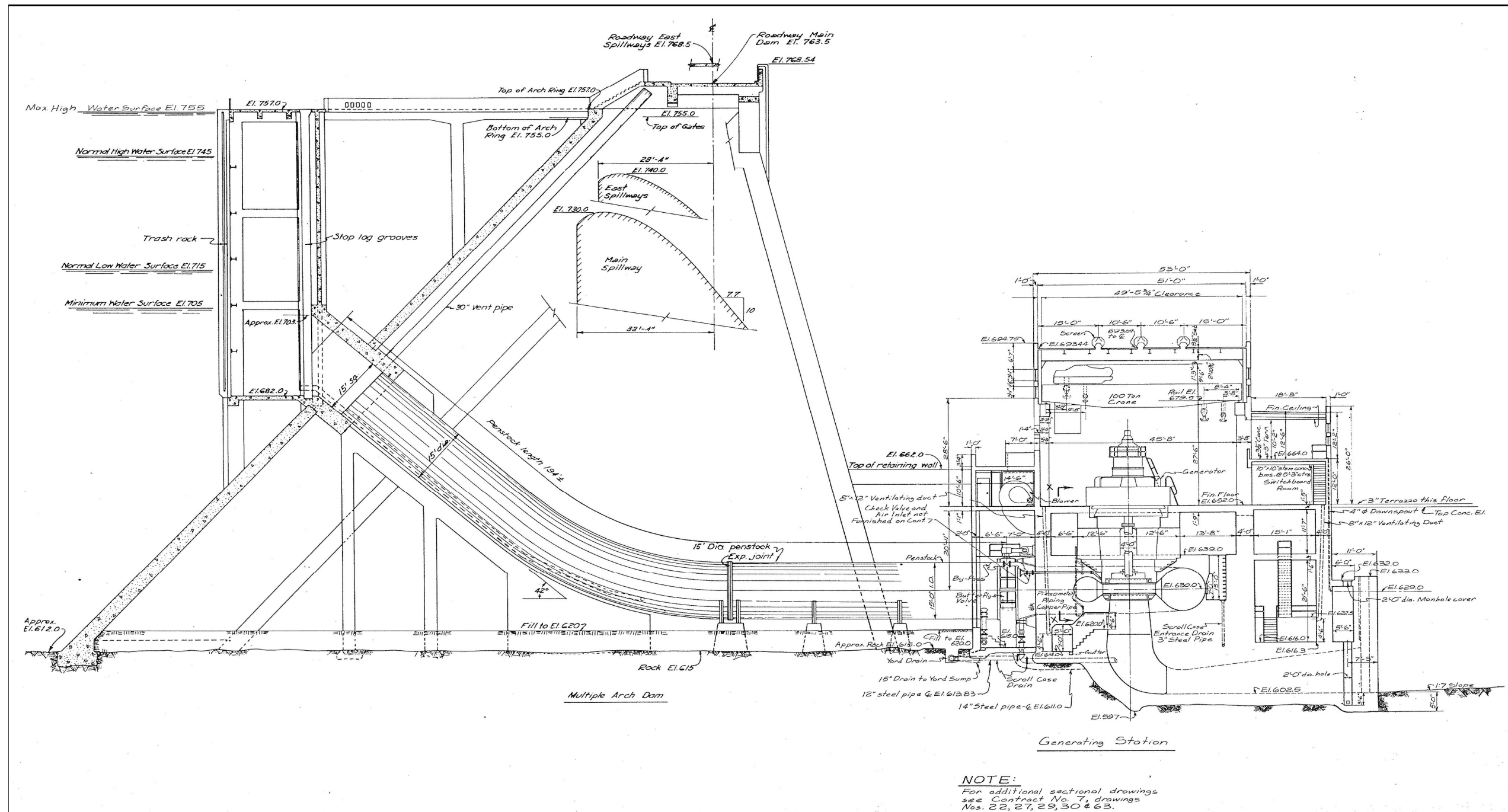
$$Q = (H / K_q)^{1/2}$$

$$K_q = 1 / (C^2 * A^2 * 2g)$$

H = energy head immediately upstream of gate, measured to centerline
 Q = gate discharge (cfs)
 A = open area of gate (ft²)
 B = gate width (feet)
 G_o = gate vertical opening (feet)
 V = velocity through open area of gate (ft/s)
 C = discharge coefficient

K_v = gate valve loss coefficient (velocity-based)
 K_q = gate valve loss coefficient (discharge-based)

g (gravity constant) = 32.146 ft/s² [HDC 000-1]
 Site Latitude = 36.5 deg
 Site Elevation = 750 feet



HEAD LOSS CALCULATIONS - 2 OF 6

Darcy-Weisbach Resistance Coefficients for Various Pipe Sizes and Discharges

Discharge (cfs)	Conduit Diameter (feet)	Gravity Constant (ft/s ²)	Wetted Area (ft ²)	Wetted Perimeter (feet)	Hydraulic Diameter (feet)	Velocity (ft/sec)	Fluid Type 3	Kinematic	Density	Specific	Reynolds	Conduit Material 2	Roughness (feet)	Relative	Laminar	Critical Zone (f)
								Viscosity ft ² /s	slugs/ft ³	Weight lbf/ft ³	Number (Re)			Roughness	Zone (f)	
1	15	32.14577	176.71	47.12	15	0.0	Water, 50° F	1.41E-05	1.94	62.36	6.03E+03	Steel or wrought Iron	0.00015	1.00E-05	0.010609	indeterminate
2	15	32.14577	176.71	47.12	15	0.0		1.41E-05	1.94	62.36	1.21E+04		0.00015	1.00E-05	0.005304	indeterminate
3	15	32.14577	176.71	47.12	15	0.0		1.41E-05	1.94	62.36	1.81E+04		0.00015	1.00E-05	0.003536	indeterminate
10	15	32.14577	176.71	47.12	15	0.1		1.41E-05	1.94	62.36	6.03E+04		0.00015	1.00E-05	0.001061	indeterminate
20	15	32.14577	176.71	47.12	15	0.1		1.41E-05	1.94	62.36	1.21E+05		0.00015	1.00E-05	0.000530	indeterminate
30	15	32.14577	176.71	47.12	15	0.2		1.41E-05	1.94	62.36	1.81E+05		0.00015	1.00E-05	0.000354	indeterminate
40	15	32.14577	176.71	47.12	15	0.2		1.41E-05	1.94	62.36	2.41E+05		0.00015	1.00E-05	0.000265	indeterminate
50	15	32.14577	176.71	47.12	15	0.3		1.41E-05	1.94	62.36	3.02E+05		0.00015	1.00E-05	0.000212	indeterminate
75	15	32.14577	176.71	47.12	15	0.4		1.41E-05	1.94	62.36	4.52E+05		0.00015	1.00E-05	0.000141	indeterminate
100	15	32.14577	176.71	47.12	15	0.6		1.41E-05	1.94	62.36	6.03E+05		0.00015	1.00E-05	0.000106	indeterminate
150	15	32.14577	176.71	47.12	15	0.8		1.41E-05	1.94	62.36	9.05E+05		0.00015	1.00E-05	0.000071	indeterminate
200	15	32.14577	176.71	47.12	15	1.1		1.41E-05	1.94	62.36	1.21E+06		0.00015	1.00E-05	0.000053	indeterminate
400	15	32.14577	176.71	47.12	15	2.3		1.41E-05	1.94	62.36	2.41E+06		0.00015	1.00E-05	0.000027	indeterminate
600	15	32.14577	176.71	47.12	15	3.4		1.41E-05	1.94	62.36	3.62E+06		0.00015	1.00E-05	0.000018	indeterminate
800	15	32.14577	176.71	47.12	15	4.5		1.41E-05	1.94	62.36	4.83E+06		0.00015	1.00E-05	0.000013	indeterminate
1000	15	32.14577	176.71	47.12	15	5.7		1.41E-05	1.94	62.36	6.03E+06		0.00015	1.00E-05	0.000011	indeterminate
1200	15	32.14577	176.71	47.12	15	6.8		1.41E-05	1.94	62.36	7.24E+06		0.00015	1.00E-05	0.000009	indeterminate
1400	15	32.14577	176.71	47.12	15	7.9		1.41E-05	1.94	62.36	8.45E+06		0.00015	1.00E-05	0.000008	indeterminate
1600	15	32.14577	176.71	47.12	15	9.1		1.41E-05	1.94	62.36	9.65E+06		0.00015	1.00E-05	0.000007	indeterminate
1800	15	32.14577	176.71	47.12	15	10.2		1.41E-05	1.94	62.36	1.09E+07		0.00015	1.00E-05	0.000006	indeterminate
2000	15	32.14577	176.71	47.12	15	11.3		1.41E-05	1.94	62.36	1.21E+07		0.00015	1.00E-05	0.000005	indeterminate
2200	15	32.14577	176.71	47.12	15	12.4		1.41E-05	1.94	62.36	1.33E+07		0.00015	1.00E-05	0.000005	indeterminate
2400	15	32.14577	176.71	47.12	15	13.6		1.41E-05	1.94	62.36	1.45E+07		0.00015	1.00E-05	0.000004	indeterminate
2600	15	32.14577	176.71	47.12	15	14.7		1.41E-05	1.94	62.36	1.57E+07		0.00015	1.00E-05	0.000004	indeterminate
2800	15	32.14577	176.71	47.12	15	15.8		1.41E-05	1.94	62.36	1.69E+07		0.00015	1.00E-05	0.000004	indeterminate
3000	15	32.14577	176.71	47.12	15	17.0		1.41E-05	1.94	62.36	1.81E+07		0.00015	1.00E-05	0.000004	indeterminate

HEAD LOSS CALCULATIONS - 3 OF 6

Smooth Pipes				Transition Zone				Rough Pipes (f)	Rough Pipe Limit (Re)	Flow Regime	Selected Coeff. (f)	Darcy-Weisbach Resistance		Friction Slope Factors		Headloss Coefficients (K)		Loss per Unit Length of Co	
Guess Value (f)	Left Half Equation	Right Half Equation	Difference (<0.001)	Guess Value (f)	Left Half Equation	Right Half Equation	Difference (<0.001)					Discharge (cfs)	15' Dia. Steel	Discharge (cfs)	15' Dia. Steel	Discharge (cfs)	15' Dia. Steel	Discharge (cfs)	15' Dia. Steel
0.035456	5.31074	5.31074	0.0000	0.035461	5.31039	5.31039	0.0000	0.008061	2.23E+08	Transition	0.035461	0	0.03546	0	0.00E+00	0	1.17E-09	0	0.00E+00
0.029406	5.83154	5.83154	0.0000	0.029417	5.83044	5.83044	0.0000	0.008061	2.23E+08	Transition	0.029417	1	0.03546	1	1.17E-09	1	1.17E-09	1	1.17E-09
0.026533	6.13908	6.13908	0.0000	0.026549	6.13726	6.13726	0.0000	0.008061	2.23E+08	Transition	0.026549	2	0.02942	2	3.87E-09	2	9.68E-10	2	3.87E-09
0.020045	7.06306	7.06306	0.0000	0.020082	7.05659	7.05659	0.0000	0.008061	2.23E+08	Transition	0.020082	3	0.02655	3	7.87E-09	3	8.74E-10	3	7.87E-09
0.017307	7.60133	7.60133	0.0000	0.017364	7.58876	7.58875	0.0000	0.008061	2.23E+08	Transition	0.017364	10	0.02008	10	6.61E-08	10	6.61E-10	10	6.61E-08
0.015950	7.91805	7.91806	0.0000	0.016024	7.89967	7.89967	0.0000	0.008061	2.23E+08	Transition	0.016024	20	0.01736	20	2.29E-07	20	5.72E-10	20	2.29E-07
0.015079	8.14354	8.14354	0.0000	0.015168	8.11954	8.11954	0.0000	0.008061	2.23E+08	Transition	0.015168	30	0.01602	30	4.75E-07	30	5.28E-10	30	4.75E-07
0.014450	8.31886	8.31886	0.0000	0.014553	8.28939	8.28939	0.0000	0.008061	2.23E+08	Transition	0.014553	40	0.01517	40	7.99E-07	40	4.99E-10	40	7.99E-07
0.013401	8.63831	8.63831	0.0000	0.013535	8.59563	8.59563	0.0000	0.008061	2.23E+08	Transition	0.013535	50	0.01455	50	1.20E-06	50	4.79E-10	50	1.20E-06
0.012723	8.86563	8.86563	0.0000	0.012883	8.81025	8.81025	0.0000	0.008061	2.23E+08	Transition	0.012883	75	0.01353	75	2.51E-06	75	4.46E-10	75	2.51E-06
0.011848	9.18689	9.18689	0.0000	0.012057	9.10727	9.10727	0.0000	0.008061	2.23E+08	Transition	0.012057	100	0.01288	100	4.24E-06	100	4.24E-10	100	4.24E-06
0.011280	9.41543	9.41543	0.0000	0.011530	9.31274	9.31274	0.0000	0.008061	2.23E+08	Transition	0.011530	150	0.01206	150	8.93E-06	150	3.97E-10	150	8.93E-06
0.010064	9.96796	9.96796	0.0000	0.010452	9.78138	9.78138	0.0000	0.008061	2.23E+08	Transition	0.010452	200	0.01153	200	1.52E-05	200	3.80E-10	200	1.52E-05
0.009440	10.29232	10.29233	0.0000	0.009937	10.03147	10.03147	0.0000	0.008061	2.23E+08	Transition	0.009937	400	0.01045	400	5.51E-05	400	3.44E-10	400	5.51E-05
0.009031	10.52295	10.52295	0.0000	0.009621	10.19489	10.19489	0.0000	0.008061	2.23E+08	Transition	0.009621	600	0.00994	600	1.18E-04	600	3.27E-10	600	1.18E-04
0.008731	10.70211	10.70211	0.0000	0.009403	10.31245	10.31245	0.0000	0.008061	2.23E+08	Transition	0.009403	800	0.00962	800	2.03E-04	800	3.17E-10	800	2.03E-04
0.008497	10.84866	10.84866	0.0000	0.009242	10.40205	10.40205	0.0000	0.008061	2.23E+08	Transition	0.009242	1000	0.00940	1000	3.10E-04	1000	3.10E-10	1000	3.10E-04
0.008306	10.97268	10.97268	0.0000	0.009117	10.47306	10.47306	0.0000	0.008061	2.23E+08	Transition	0.009117	1200	0.00924	1200	4.38E-04	1200	3.04E-10	1200	4.38E-04
0.008145	11.08020	11.08019	0.0000	0.009017	10.53095	10.53095	0.0000	0.008061	2.23E+08	Transition	0.009017	1400	0.00912	1400	5.88E-04	1400	3.00E-10	1400	5.88E-04
0.008008	11.17509	11.17509	0.0000	0.008935	10.57918	10.57918	0.0000	0.008061	2.23E+08	Transition	0.008935	1600	0.00902	1600	7.60E-04	1600	2.97E-10	1600	7.60E-04
0.007887	11.26003	11.26003	0.0000	0.008866	10.62006	10.62006	0.0000	0.008061	2.23E+08	Transition	0.008866	1800	0.00894	1800	9.53E-04	1800	2.94E-10	1800	9.53E-04
0.007781	11.33691	11.33691	0.0000	0.008808	10.65521	10.65521	0.0000	0.008061	2.23E+08	Transition	0.008808	2000	0.00887	2000	1.17E-03	2000	2.92E-10	2000	1.17E-03
0.007685	11.40712	11.40712	0.0000	0.008758	10.68577	10.68577	0.0000	0.008061	2.23E+08	Transition	0.008758	2200	0.00881	2200	1.40E-03	2200	2.90E-10	2200	1.40E-03
0.007599	11.47174	11.47174	0.0000	0.008714	10.71262	10.71262	0.0000	0.008061	2.23E+08	Transition	0.008714	2400	0.00876	2400	1.66E-03	2400	2.88E-10	2400	1.66E-03
0.007520	11.53159	11.53159	0.0000	0.008675	10.73640	10.73640	0.0000	0.008061	2.23E+08	Transition	0.008675	2600	0.00871	2600	1.94E-03	2600	2.87E-10	2600	1.94E-03
0.007448	11.58733	11.58733	0.0000	0.008641	10.75763	10.75763	0.0000	0.008061	2.23E+08	Transition	0.008641	2800	0.00868	2800	2.24E-03	2800	2.86E-10	2800	2.24E-03
												3000	0.00864	3000	2.56E-03	3000	2.84E-10	3000	2.56E-03
												99999	0.00864	99999	2.56E-03	99999	2.84E-10	99999	2.84E+00

D_h = 15

D_h = 15

D_h = 15

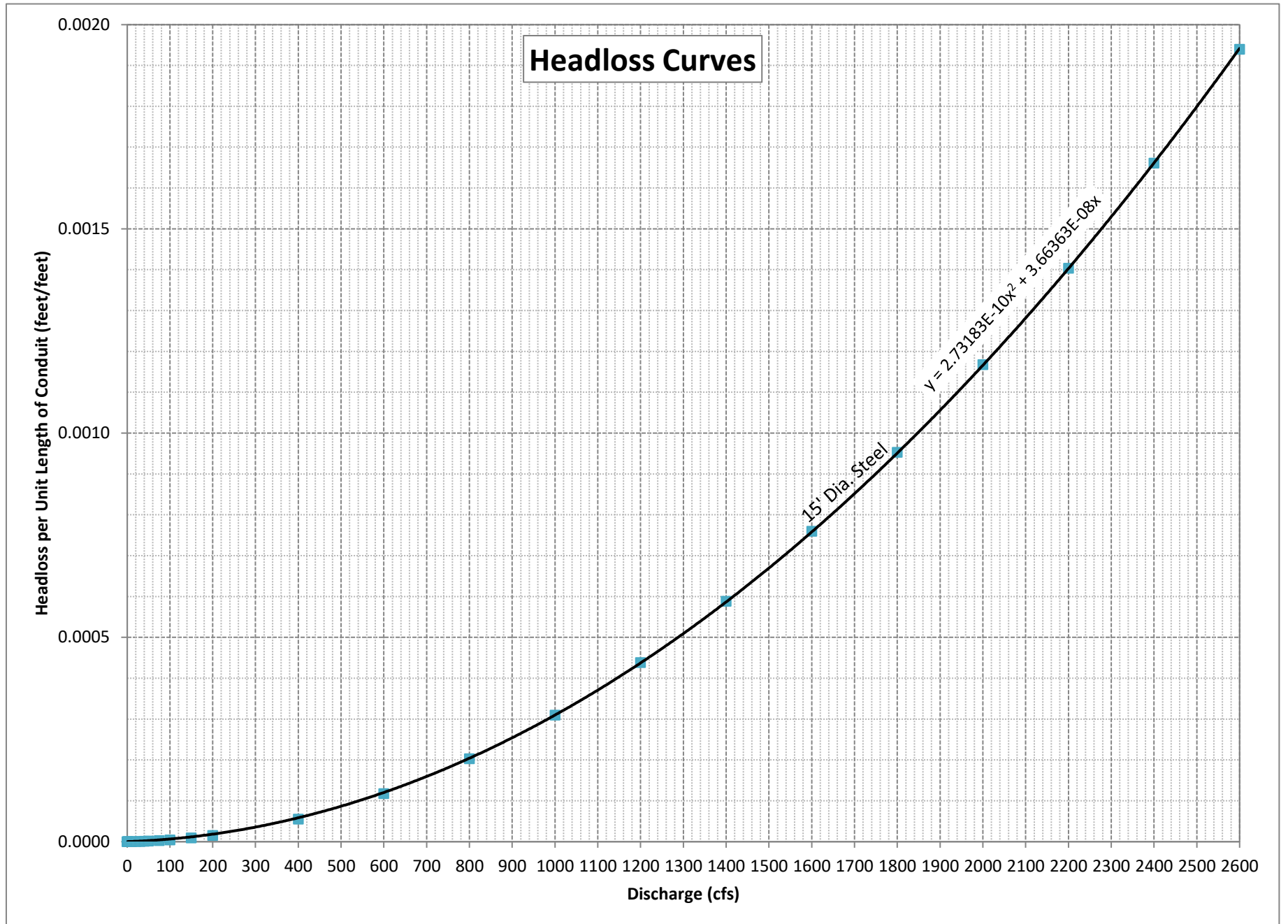
D_h = 15

y=ax²+bx; where y=headloss per foot, x=discharge, and a/b are constants determined from trendline equation

a = 2.73183E-10

b = 3.66363E-08

HEAD LOSS CALCULATIONS - 4 OF 6



HEAD LOSS CALCULATIONS - 5 OF 6

Computed Darcy-Weisbach Resistance Coefficients

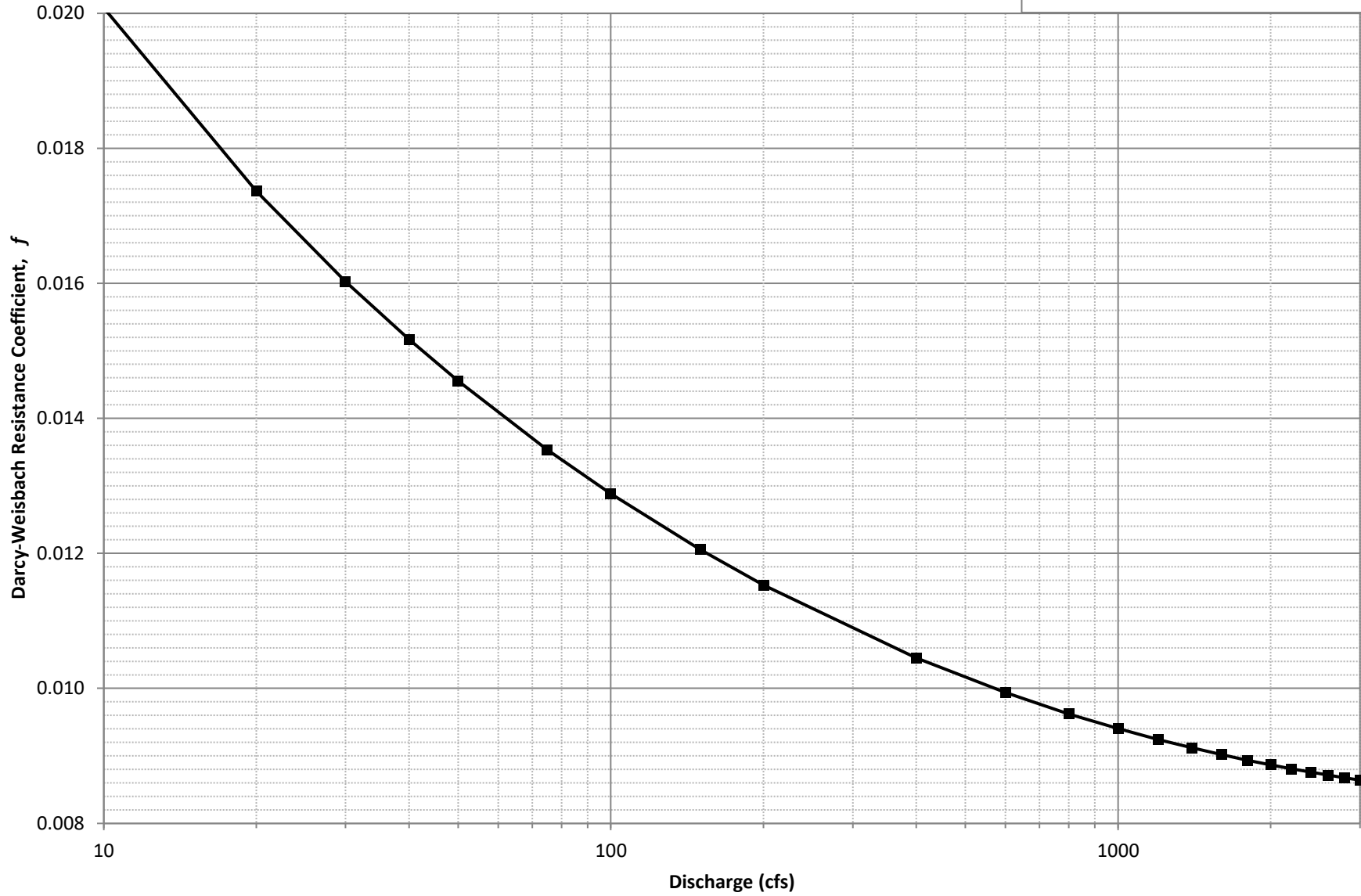
Assumptions:

1) Water at 50°F

2) Gravity = 32.15 ft/s²

3) Roughness, $k = 0.00015$ feet (steel)

■ 15' Dia. Steel

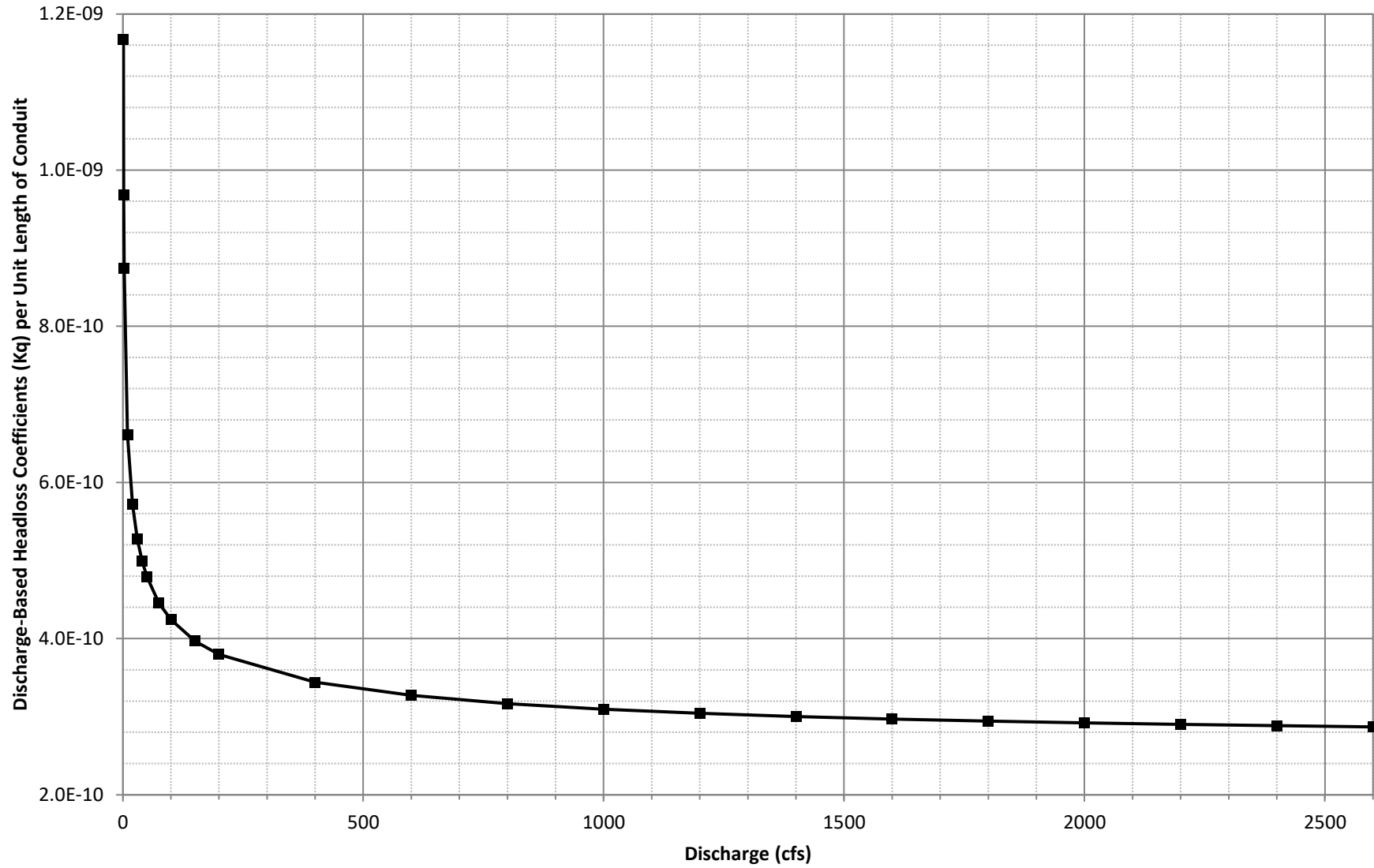


HEAD LOSS CALCULATIONS - 6 OF 6

Computed Discharge-Based Headloss Coefficients, K_q per Unit Length of Conduit

- Assumptions:
- 1) Water at 50°F
 - 2) Gravity = 32.15 ft/s²
 - 3) Roughness, $k = 0.00015$ feet (steel)

—■— 15' Dia. Steel



Pensacola Turbine-Generator Efficiency Hill Curve with Air Valves Closed

Discharge (cfs)	Total Turbine-Generator Efficiency (%) vs. Net Head (ft)												
	0	95	100	105	110	115	117.5	120	125	130	135	140	999
0	0.0%	0.0%	0.0%	0.0%	0.0%	0.0%	0.0%	0.0%	0.0%	0.0%	0.0%	0.0%	0.0%
700	0.0%	60.6%	54.1%	47.3%	40.4%	32.9%	28.3%	23.9%	16.2%	12.9%	12.2%	11.6%	0.0%
750	0.0%	68.2%	63.5%	56.2%	50.6%	45.1%	42.4%	39.7%	34.6%	31.9%	31.3%	30.6%	0.0%
800	0.0%	72.6%	72.0%	66.4%	60.9%	55.4%	52.7%	50.2%	47.2%	46.0%	45.6%	45.2%	0.0%
850	0.0%	74.8%	75.1%	74.5%	71.8%	65.9%	63.2%	61.5%	58.5%	57.7%	57.4%	57.0%	0.0%
900	0.0%	76.5%	77.0%	77.0%	75.7%	73.9%	73.4%	72.5%	69.9%	69.6%	69.2%	68.9%	0.0%
950	0.0%	77.7%	78.4%	78.6%	77.9%	76.4%	76.0%	75.5%	74.8%	74.4%	74.3%	74.3%	0.0%
1000	0.0%	78.7%	79.6%	79.9%	79.4%	78.3%	77.8%	77.5%	76.6%	76.0%	75.7%	75.5%	0.0%
1050	0.0%	79.3%	80.4%	81.0%	80.6%	79.7%	79.4%	79.0%	78.1%	77.4%	77.0%	76.7%	0.0%
1100	0.0%	79.7%	80.8%	81.6%	81.5%	80.9%	80.6%	80.2%	79.5%	78.7%	78.3%	77.9%	0.0%
1150	0.0%	80.0%	81.2%	81.9%	82.2%	81.8%	81.6%	81.3%	80.6%	80.0%	79.5%	79.1%	0.0%
1200	0.0%	80.4%	81.4%	82.2%	82.9%	82.6%	82.3%	82.1%	81.7%	81.1%	80.6%	80.2%	0.0%
1250	0.0%	80.8%	81.6%	82.5%	83.3%	83.3%	83.1%	82.9%	82.5%	82.1%	81.7%	81.2%	0.0%
1300	0.0%	81.2%	81.9%	82.8%	83.6%	84.0%	83.8%	83.7%	83.4%	83.0%	82.6%	82.2%	0.0%
1350	0.0%	81.7%	82.4%	83.2%	83.9%	84.5%	84.4%	84.3%	84.1%	83.8%	83.5%	83.1%	0.0%
1400	0.0%	82.2%	82.9%	83.6%	84.2%	84.8%	85.0%	84.9%	84.8%	84.5%	84.3%	84.0%	0.0%
1450	0.0%	82.7%	83.5%	84.1%	84.6%	85.1%	85.3%	85.5%	85.5%	85.3%	85.0%	84.7%	0.0%
1500	0.0%	83.2%	84.0%	84.7%	85.2%	85.7%	85.9%	86.1%	86.2%	86.0%	85.7%	85.4%	0.0%
1550	0.0%	83.8%	84.6%	85.3%	85.8%	86.2%	86.5%	86.6%	86.8%	86.7%	86.4%	86.1%	0.0%
1600	0.0%	84.7%	85.4%	86.0%	86.5%	86.9%	87.0%	87.2%	87.4%	87.4%	87.1%	86.8%	0.0%
1650	0.0%	85.6%	86.2%	86.8%	87.2%	87.5%	87.6%	87.7%	88.0%	88.1%	87.8%	87.5%	0.0%
1700	0.0%	86.5%	87.0%	87.6%	88.0%	88.2%	88.3%	88.4%	88.7%	88.8%	88.6%	88.2%	0.0%
1750	0.0%	87.4%	88.0%	88.5%	88.9%	88.9%	89.0%	89.1%	89.4%	89.6%	89.4%	89.0%	0.0%
1800	0.0%	88.5%	88.9%	89.3%	89.6%	89.9%	89.9%	90.0%	90.1%	90.2%	90.2%	89.7%	0.0%
1850	0.0%	89.5%	89.7%	90.1%	90.4%	90.6%	90.7%	90.8%	90.8%	90.8%	90.8%	90.5%	0.0%
1900	0.0%	90.0%	90.5%	90.8%	91.1%	91.2%	91.3%	91.4%	91.4%	91.4%	91.4%	91.0%	0.0%
1950	0.0%	89.9%	90.7%	91.3%	91.5%	91.6%	91.7%	91.8%	91.9%	91.8%	91.8%	91.5%	0.0%
2000	0.0%	89.5%	90.0%	91.0%	91.3%	91.5%	91.6%	91.7%	91.9%	92.0%	91.8%	91.4%	0.0%
2050	0.0%	89.1%	89.5%	90.3%	90.9%	91.2%	91.3%	91.4%	91.5%	91.6%	91.7%	91.3%	0.0%
2100	0.0%	88.5%	89.1%	89.6%	90.4%	90.6%	90.8%	91.0%	91.1%	91.2%	91.3%	91.1%	0.0%
2150	0.0%	87.7%	88.7%	89.2%	89.8%	90.2%	90.3%	90.4%	90.7%	90.8%	90.8%	90.7%	0.0%
2200	0.0%	87.0%	88.0%	88.7%	89.3%	89.8%	89.9%	90.0%	90.1%	90.3%	90.4%	90.5%	0.0%
2250	0.0%	86.2%	87.2%	88.1%	88.8%	89.4%	89.6%	89.7%	89.8%	89.9%	90.0%	90.2%	0.0%
2300	0.0%	85.5%	86.5%	87.4%	88.2%	88.9%	89.1%	89.3%	89.4%	89.5%	89.7%	89.8%	0.0%
2350	0.0%	84.6%	85.7%	86.6%	87.5%	88.2%	88.5%	88.7%	89.0%	89.2%	89.2%	89.3%	0.0%
2400	0.0%	83.6%	84.8%	85.8%	86.7%	87.5%	87.8%	88.0%	88.4%	88.7%	88.8%	88.7%	0.0%
2450	0.0%	82.3%	83.7%	84.9%	85.9%	86.7%	87.0%	87.3%	87.7%	88.1%	88.3%	88.1%	0.0%
2500	0.0%	80.7%	82.5%	83.9%	84.9%	85.7%	86.0%	86.4%	86.9%	87.4%	87.6%	87.5%	0.0%
2550	0.0%	78.0%	80.9%	82.5%	83.7%	84.6%	85.0%	85.4%	86.0%	86.6%	86.8%	86.9%	0.0%
2600	0.0%	74.7%	78.1%	80.7%	82.3%	83.4%	83.9%	84.3%	85.0%	85.6%	85.9%	86.0%	0.0%

Pensacola Turbine-Generator Efficiency Hill Curve with Air Valves Fully Open (90 degrees open)

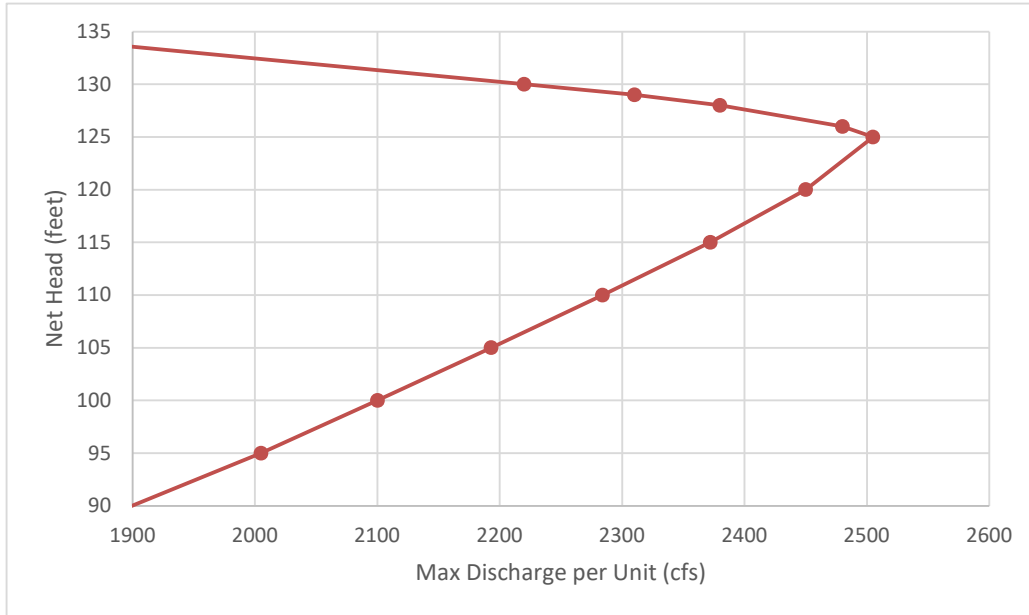
Discharge (cfs)	Total Turbine-Generator Efficiency (%) vs. Net Head (ft)												
	0	95	100	105	110	115	117.5	120	125	130	135	140	999
0	0.0%	0.0%	0.0%	0.0%	0.0%	0.0%	0.0%	0.0%	0.0%	0.0%	0.0%	0.0%	0.0%
700	0.0%	40.3%	36.0%	31.5%	26.9%	21.9%	18.9%	15.9%	10.8%	8.6%	8.1%	7.7%	0.0%
750	0.0%	38.0%	35.4%	31.3%	28.2%	25.1%	23.7%	22.2%	19.3%	17.8%	17.5%	17.1%	0.0%
800	0.0%	39.1%	38.8%	35.8%	32.8%	29.9%	28.4%	27.1%	25.5%	24.8%	24.6%	24.4%	0.0%
850	0.0%	39.4%	39.6%	39.2%	37.8%	34.7%	33.3%	32.4%	30.8%	30.4%	30.2%	30.0%	0.0%
900	0.0%	39.7%	40.0%	40.0%	39.3%	38.3%	38.1%	37.6%	36.3%	36.1%	35.9%	35.7%	0.0%
950	0.0%	44.0%	44.4%	44.4%	44.0%	43.2%	43.0%	42.7%	42.3%	42.1%	42.0%	42.0%	0.0%
1000	0.0%	48.4%	48.9%	49.1%	48.8%	48.1%	47.9%	47.6%	47.1%	46.7%	46.6%	46.4%	0.0%
1050	0.0%	50.7%	51.4%	51.8%	51.6%	51.0%	50.8%	50.6%	50.0%	49.6%	49.3%	49.1%	0.0%
1100	0.0%	53.1%	53.9%	54.4%	54.4%	54.0%	53.8%	53.5%	53.0%	52.6%	52.3%	52.0%	0.0%
1150	0.0%	55.6%	56.4%	56.9%	57.1%	56.9%	56.7%	56.6%	56.1%	55.6%	55.3%	55.0%	0.0%
1200	0.0%	58.2%	58.9%	59.5%	60.1%	59.9%	59.7%	59.5%	59.2%	58.8%	58.4%	58.1%	0.0%
1250	0.0%	60.9%	61.5%	62.2%	62.8%	62.8%	62.6%	62.5%	62.1%	61.8%	61.5%	61.2%	0.0%
1300	0.0%	63.5%	64.1%	64.8%	65.4%	65.7%	65.6%	65.5%	65.2%	64.9%	64.6%	64.3%	0.0%
1350	0.0%	66.4%	66.9%	67.5%	68.1%	68.6%	68.5%	68.4%	68.2%	68.0%	67.7%	67.4%	0.0%
1400	0.0%	69.2%	69.8%	70.3%	70.8%	71.3%	71.5%	71.4%	71.2%	71.1%	70.9%	70.6%	0.0%
1450	0.0%	72.2%	72.9%	73.4%	73.9%	74.3%	74.5%	74.6%	74.6%	74.4%	74.2%	74.0%	0.0%
1500	0.0%	75.1%	75.8%	76.4%	76.8%	77.3%	77.5%	77.7%	77.7%	77.6%	77.5%	77.2%	0.0%
1550	0.0%	77.7%	78.4%	79.1%	79.5%	79.9%	80.1%	80.3%	80.5%	80.4%	80.2%	79.9%	0.0%
1600	0.0%	79.7%	80.3%	80.9%	81.4%	81.7%	81.9%	82.1%	82.3%	82.2%	82.0%	81.8%	0.0%
1650	0.0%	81.3%	81.9%	82.4%	82.8%	83.1%	83.2%	83.3%	83.6%	83.7%	83.4%	83.2%	0.0%
1700	0.0%	82.2%	82.7%	83.3%	83.7%	83.8%	83.9%	84.1%	84.4%	84.5%	84.3%	83.9%	0.0%
1750	0.0%	82.7%	83.3%	83.8%	84.3%	84.3%	84.3%	84.5%	84.8%	84.9%	84.7%	84.4%	0.0%
1800	0.0%	83.3%	83.8%	84.2%	84.5%	84.7%	84.8%	84.9%	85.0%	85.1%	85.1%	84.7%	0.0%
1850	0.0%	84.0%	84.3%	84.7%	85.0%	85.1%	85.3%	85.4%	85.3%	85.4%	85.4%	85.0%	0.0%
1900	0.0%	84.3%	84.8%	85.1%	85.4%	85.5%	85.6%	85.7%	85.7%	85.7%	85.6%	85.3%	0.0%
1950	0.0%	83.9%	84.6%	85.2%	85.3%	85.5%	85.6%	85.7%	85.7%	85.7%	85.7%	85.5%	0.0%
2000	0.0%	83.2%	83.7%	84.6%	85.0%	85.1%	85.2%	85.3%	85.5%	85.6%	85.5%	85.2%	0.0%
2050	0.0%	82.3%	82.7%	83.4%	84.0%	84.3%	84.4%	84.5%	84.6%	84.8%	84.9%	84.6%	0.0%
2100	0.0%	81.3%	81.9%	82.4%	83.1%	83.4%	83.5%	83.6%	83.8%	83.9%	84.1%	83.9%	0.0%
2150	0.0%	80.1%	81.0%	81.5%	82.1%	82.4%	82.5%	82.6%	82.9%	83.1%	83.2%	83.1%	0.0%
2200	0.0%	78.6%	79.5%	80.2%	80.8%	81.2%	81.3%	81.4%	81.6%	81.8%	82.0%	82.1%	0.0%
2250	0.0%	77.1%	78.0%	78.8%	79.5%	80.0%	80.1%	80.3%	80.5%	80.7%	80.9%	81.0%	0.0%
2300	0.0%	75.7%	76.6%	77.4%	78.1%	78.8%	79.0%	79.2%	79.4%	79.6%	79.8%	79.9%	0.0%
2350	0.0%	74.5%	75.5%	76.3%	77.1%	77.7%	78.0%	78.3%	78.6%	78.8%	78.9%	79.1%	0.0%
2400	0.0%	73.3%	74.3%	75.2%	76.0%	76.8%	77.1%	77.3%	77.8%	78.1%	78.2%	78.3%	0.0%
2450	0.0%	72.0%	73.2%	74.2%	75.1%	75.8%	76.2%	76.5%	77.0%	77.3%	77.6%	77.6%	0.0%
2500	0.0%	70.7%	72.3%	73.5%	74.4%	75.1%	75.5%	75.8%	76.5%	76.9%	77.2%	77.3%	0.0%
2550	0.0%	68.5%	71.1%	72.5%	73.6%	74.4%	74.8%	75.2%	75.9%	76.4%	76.8%	77.0%	0.0%
2600	0.0%	66.0%	69.0%	71.2%	72.6%	73.7%	74.2%	74.6%	75.3%	75.9%	76.3%	76.7%	0.0%

Kerr Turbine Efficiency Hill Curve (Refurbished Units 2010)

Discharge (cfs)	Total Turbine-Generator Efficiency (%) vs. Head (ft)								
	0	35	51	54	56	58	61	80	999
0	0%	61.2%	76.5%	76.5%	76.7%	76.9%	76.9%	61.5%	0%
2000	0%	65.6%	83.8%	84.1%	84.4%	84.7%	84.7%	67.9%	0%
2500	0%	66.8%	85.3%	85.5%	85.8%	86.1%	86.2%	69.0%	0%
3000	0%	68.0%	86.7%	86.9%	87.2%	87.6%	87.7%	70.3%	0%
3500	0%	69.2%	88.1%	88.3%	88.7%	89.1%	89.1%	71.3%	0%
4000	0%	70.2%	89.4%	89.6%	89.9%	90.2%	90.1%	72.2%	0%
4500	0%	70.7%	90.0%	90.1%	90.4%	90.7%	90.7%	72.6%	0%
4750	0%	71.2%	90.5%	90.6%	90.9%	91.2%	91.2%	73.0%	0%
5000	0%	71.6%	90.9%	91.1%	91.3%	91.6%	91.6%	73.3%	0%
5250	0%	71.9%	91.3%	91.4%	91.7%	92.0%	91.9%	73.5%	0%
5500	0%	72.1%	91.4%	91.6%	91.9%	92.1%	92.0%	73.6%	0%
6000	0%	72.2%	91.4%	91.5%	91.7%	92.0%	91.9%	73.5%	0%
6500	0%	72.1%	91.0%	91.1%	91.3%	91.6%	91.5%	73.2%	0%
7000	0%	71.6%	90.2%	90.3%	90.6%	90.8%	90.7%	72.6%	0%
7500	0%	71.5%	89.8%	89.9%	90.2%	90.4%	90.3%	72.2%	0%
8500	0%	70.1%	87.9%	88.0%	88.2%	88.4%	88.2%	70.5%	0%
9000	0%	69.3%	87.0%	87.0%	87.2%	87.3%	87.2%	69.6%	0%

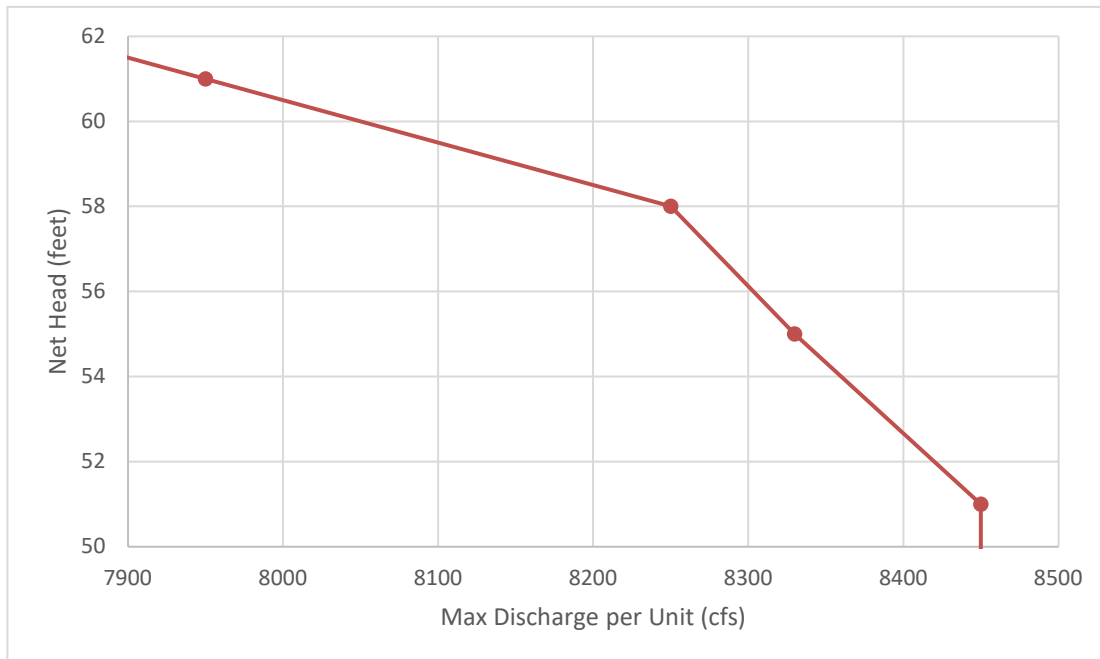
Pensacola Dam Maximum Discharge (cfs) per Unit vs. Net Head Discharge Limited by Cavitation - 6 Units Total

Net Head (ft)	Max Discharge per Unit (cfs)	Max Discharge Total (cfs)
0	0	0
95	2005	12030
100	2100	12600
105	2193	13158
110	2284	13704
115	2372	14232
120	2450	14700
125	2505	15030
126	2480	14880
128	2380	14280
129	2310	13860
130	2220	13320
154.67	0	0
999.00	0	0



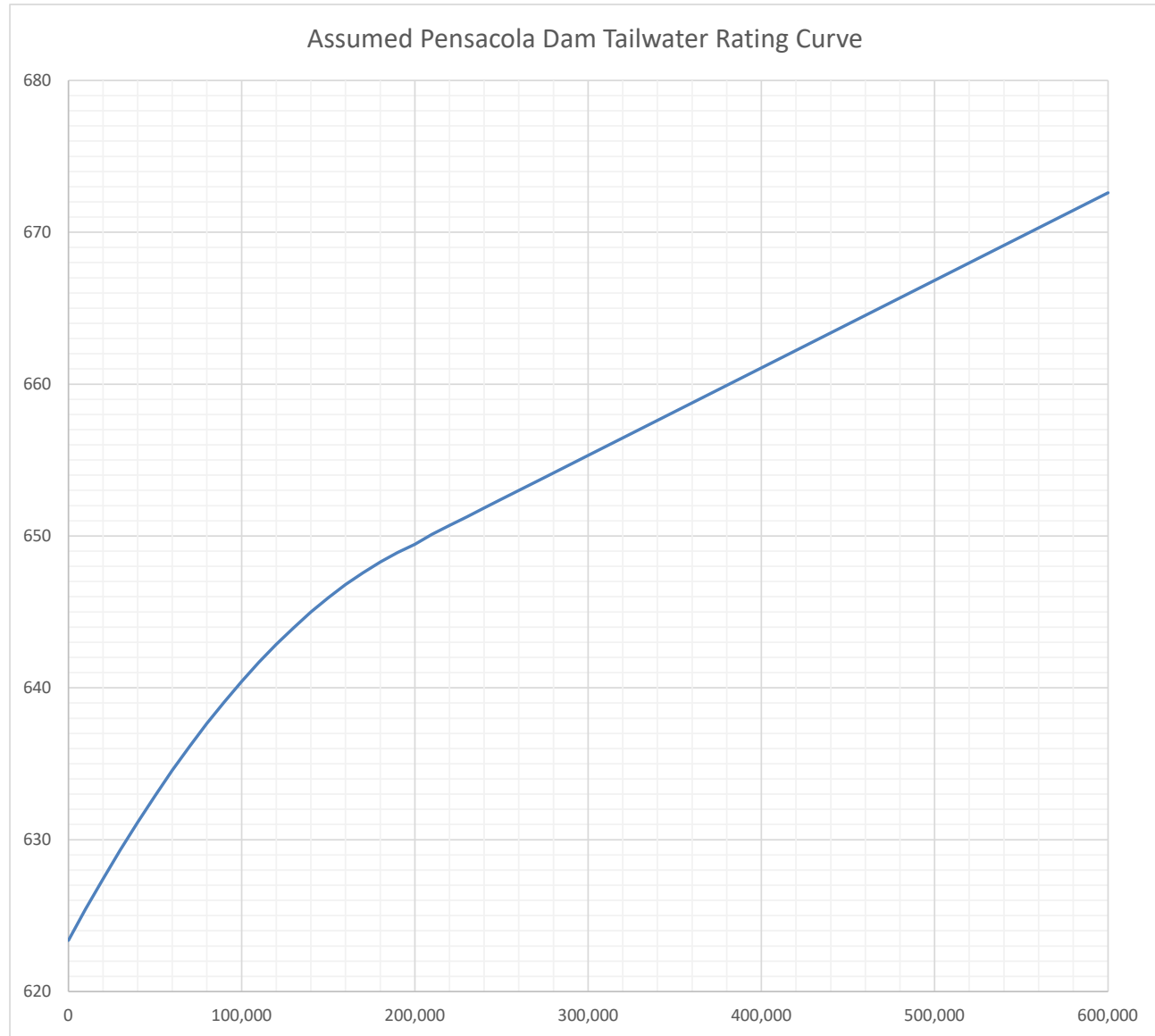
Kerr Dam Maximum Discharge (cfs) per Unit vs. Net Head Discharge Limited by Cavitation - 4 Units Total

Net Head (ft)	Max Discharge per Unit (cfs)	Max Discharge Total (cfs)
0	8450	33800
51	8450	33800
55	8330	33320
58	8250	33000
61	7950	31800
140.50	0	0
999	0	0



Pensacola Dam Tailwater Rating Curve

Discharge (cfs)	TW Elev (ft PD)
0	623.37
10000	625.43
20000	627.42
30000	629.32
40000	631.15
50000	632.89
60000	634.56
70000	636.14
80000	637.65
90000	639.07
100000	640.41
110000	641.68
120000	642.86
130000	643.97
140000	644.99
150000	645.93
160000	646.80
170000	647.58
180000	648.28
190000	648.90
200000	649.45
210000	650.11
220000	650.69
230000	651.27
240000	651.84
250000	652.42
275000	653.86
300000	655.30
600000	672.61



SAMPLE TURBINE-GENERATOR OUTAGE DATA

Plant	Unit No.	Outage Begin	Outage End	Plant	Unit No.	Outage Begin	Outage End	Plant	Unit No.	Outage Begin	Outage End
Pensacola	1	5/15/2003 13:00	5/15/2003 16:00	Pensacola	2	10/29/2014 16:05	10/29/2014 16:06	Pensacola	4	1/30/2013 13:22	1/30/2013 14:19
Pensacola	1	9/19/2004 5:00	10/3/2004 5:00	Pensacola	2	1/6/2015 7:40	1/6/2015 9:44	Pensacola	4	2/7/2013 9:43	2/7/2013 12:50
Pensacola	1	9/29/2004 7:00	10/3/2004 5:00	Pensacola	2	1/12/2015 9:43	1/26/2015 14:47	Pensacola	4	8/13/2013 15:10	8/13/2013 16:29
Pensacola	1	10/3/2004 5:00	10/6/2004 5:00	Pensacola	2	3/8/2015 7:23	3/8/2015 9:38	Pensacola	4	9/19/2013 6:05	9/19/2013 10:59
Pensacola	1	10/6/2004 5:00	10/15/2004 5:00	Pensacola	2	3/21/2015 14:03	3/21/2015 16:10	Pensacola	4	12/6/2013 18:00	12/7/2013 9:35
Pensacola	1	10/15/2004 5:00	2/1/2005 6:00	Pensacola	2	6/20/2015 18:40	6/20/2015 19:14	Pensacola	4	12/7/2013 9:35	12/7/2013 10:37
Pensacola	1	1/18/2005 6:00	2/15/2005 6:00	Pensacola	2	9/24/2015 15:35	9/24/2015 16:28	Pensacola	4	12/24/2013 9:46	12/24/2013 13:43
Pensacola	1	10/24/2005 5:00	10/25/2005 5:00	Pensacola	2	10/2/2015 17:11	10/2/2015 20:55	Pensacola	4	1/5/2015 5:30	1/5/2015 7:45
Pensacola	1	12/13/2005 23:00	12/16/2005 23:00	Pensacola	2	10/29/2015 9:08	10/30/2015 10:36	Pensacola	4	4/18/2015 15:21	4/18/2015 20:26
Pensacola	1	12/19/2005 6:00	12/20/2005 6:00	Pensacola	3	2/10/2003 6:00	3/1/2003 6:00	Pensacola	4	6/20/2015 18:40	6/20/2015 19:14
Pensacola	1	8/10/2006 5:00	8/15/2006 5:00	Pensacola	3	5/15/2003 13:00	5/17/2003 5:00	Pensacola	4	6/24/2015 10:44	6/24/2015 11:03
Pensacola	1	9/19/2006 12:00	9/22/2006 20:00	Pensacola	3	8/14/2003 5:00	8/15/2003 5:00	Pensacola	4	9/24/2015 15:35	9/24/2015 16:27
Pensacola	1	9/25/2006 20:00	9/27/2006 5:00	Pensacola	3	8/23/2003 5:00	8/28/2003 5:00	Pensacola	4	10/2/2015 15:30	10/2/2015 20:55
Pensacola	1	9/27/2006 12:00	10/2/2006 5:00	Pensacola	3	12/1/2003 6:00	3/1/2004 6:00	Pensacola	5	1/24/2003 15:00	2/3/2003 22:00
Pensacola	1	9/27/2006 14:00	10/2/2006 5:00	Pensacola	3	6/10/2004 5:00	6/14/2004 5:00	Pensacola	5	11/6/2004 13:24	11/8/2004 22:00
Pensacola	1	10/3/2006 13:00	10/5/2006 5:00	Pensacola	3	9/2/2004 5:00	9/5/2004 5:00	Pensacola	5	12/13/2005 23:00	12/16/2005 23:00
Pensacola	1	10/5/2006 5:00	10/6/2006 5:00	Pensacola	3	9/9/2004 13:00	9/10/2004 21:00	Pensacola	5	12/17/2005 6:00	12/20/2005 6:00
Pensacola	1	10/6/2006 5:00	10/8/2006 5:00	Pensacola	3	5/31/2005 17:00	6/1/2005 21:00	Pensacola	5	8/10/2006 5:00	8/15/2006 5:00
Pensacola	1	11/28/2006 18:00	12/31/2006 6:00	Pensacola	3	6/1/2005 21:00	6/2/2005 17:00	Pensacola	5	9/19/2006 12:00	9/22/2006 20:00
Pensacola	1	3/14/2007 13:00	3/15/2007 4:00	Pensacola	3	12/13/2005 23:00	12/16/2005 23:00	Pensacola	5	9/25/2006 20:00	9/27/2006 5:00
Pensacola	1	3/14/2007 19:00	3/15/2007 4:00	Pensacola	3	12/17/2005 6:00	12/20/2005 6:00	Pensacola	5	9/27/2006 12:00	10/2/2006 5:00
Pensacola	1	3/15/2007 14:00	3/17/2007 19:00	Pensacola	3	2/27/2006 6:00	3/4/2006 6:00	Pensacola	5	9/27/2006 14:00	10/2/2006 5:00
Pensacola	1	8/23/2007 5:00	8/25/2007 5:00	Pensacola	3	8/10/2006 5:00	8/15/2006 5:00	Pensacola	5	10/3/2006 13:00	10/5/2006 5:00
Pensacola	1	9/26/2007 13:00	9/29/2007 5:00	Pensacola	3	9/19/2006 12:00	9/22/2006 20:00	Pensacola	5	10/5/2006 5:00	10/6/2006 5:00
Pensacola	1	11/13/2007 18:00	11/15/2007 6:00	Pensacola	3	9/25/2006 20:00	9/27/2006 5:00	Pensacola	5	10/6/2006 5:00	10/8/2006 5:00
Pensacola	1	3/26/2008 20:08	3/29/2008 4:00	Pensacola	3	9/27/2006 12:00	10/2/2006 5:00	Pensacola	5	11/28/2006 18:00	12/31/2006 6:00
Pensacola	1	3/27/2008 12:00	3/29/2008 4:00	Pensacola	3	9/27/2006 14:00	10/2/2006 5:00	Pensacola	5	1/4/2007 16:00	3/4/2007 6:00
Pensacola	1	10/27/2009 13:00	1/30/2010 6:00	Pensacola	3	10/3/2006 13:00	10/5/2006 5:00	Pensacola	5	3/14/2007 19:00	3/15/2007 4:00
Pensacola	1	4/20/2010 5:00	4/30/2010 5:00	Pensacola	3	10/3/2006 13:02	10/5/2006 5:00	Pensacola	5	4/12/2007 13:11	4/17/2007 5:00
Pensacola	1	6/25/2010 11:00	6/25/2010 12:00	Pensacola	3	10/5/2006 5:00	10/6/2006 5:00	Pensacola	5	2/4/2008 15:10	2/5/2008 20:30
Pensacola	1	6/28/2010 11:00	6/28/2010 12:00	Pensacola	3	10/6/2006 5:00	10/8/2006 5:00	Pensacola	5	3/29/2008 18:15	4/2/2008 4:00
Pensacola	1	9/9/2010 20:25	9/10/2010 17:00	Pensacola	3	11/28/2006 18:00	12/31/2006 6:00	Pensacola	5	3/31/2008 12:00	4/2/2008 4:00
Pensacola	1	7/26/2011 17:05	7/31/2011 5:00	Pensacola	3	3/8/2007 5:00	3/8/2007 18:00	Pensacola	5	12/19/2008 6:00	1/31/2009 6:00
Pensacola	1	10/25/2011 15:02	12/31/2012 23:59	Pensacola	3	3/14/2007 13:00	3/15/2007 4:00	Pensacola	5	6/25/2010 11:00	6/25/2010 18:00
Pensacola	1	10/25/2011 15:02	12/31/2013 22:02	Pensacola	3	3/14/2007 19:00	3/15/2007 4:00	Pensacola	5	12/13/2010 12:00	3/11/2011 22:00
Pensacola	1	11/22/2011 8:10	11/23/2011 0:00	Pensacola	3	3/15/2007 14:00	3/17/2007 19:00	Pensacola	5	9/12/2011 18:25	10/1/2011 5:00
Pensacola	1	12/13/2011 8:00	12/13/2011 11:00	Pensacola	3	3/12/2008 15:00	3/14/2008 14:00	Pensacola	5	10/25/2011 15:02	12/31/2012 23:59
Pensacola	1	12/19/2011 8:00	12/19/2011 10:00	Pensacola	3	1/7/2009 13:32	3/1/2009 20:00	Pensacola	5	10/25/2011 15:02	12/31/2012 22:02
Pensacola	1	12/20/2011 9:31	12/21/2011 16:00	Pensacola	3	1/7/2009 14:00	3/1/2009 20:00	Pensacola	5	12/8/2011 14:00	12/8/2011 17:00
Pensacola	1	12/23/2011 9:19	12/23/2011 16:00	Pensacola	3	6/25/2010 11:00	6/25/2010 12:00	Pensacola	5	1/17/2012 10:30	1/18/2012 16:00
Pensacola	1	2/28/2012 8:11	3/6/2012 8:00	Pensacola	3	8/10/2010 12:00	8/17/2010 21:00	Pensacola	5	1/20/2012 11:39	1/20/2012 16:00
Pensacola	1	3/21/2012 13:05	3/22/2012 16:00	Pensacola	3	8/1/2011 12:38	8/5/2011 21:00	Pensacola	5	1/23/2012 14:47	1/24/2012 12:00
Pensacola	1	4/5/2012 9:05	4/5/2012 10:00	Pensacola	3	8/1/2011 13:00	8/5/2011 21:00	Pensacola	5	7/24/2012 12:28	7/25/2012 16:00
Pensacola	1	4/20/2012 13:30	4/20/2012 16:00	Pensacola	3	10/25/2011 15:02	12/31/2012 23:59	Pensacola	5	8/21/2012 13:16	8/21/2012 16:00
Pensacola	1	4/27/2012 9:41	4/27/2012 12:00	Pensacola	3	10/25/2011 15:02	12/31/2012 22:02	Pensacola	5	8/21/2012 13:26	8/21/2012 16:00
Pensacola	1	7/13/2012 9:39	8/1/2012 17:39	Pensacola	3	12/13/2011 8:00	12/13/2011 11:00	Pensacola	5	8/28/2012 8:20	8/28/2012 16:00
Pensacola	1	7/26/2012 8:03	7/26/2012 16:00	Pensacola	3	12/20/2011 12:23	12/20/2011 20:00	Pensacola	5	9/2/2012 20:56	9/3/2012 16:00
Pensacola	1	8/1/2012 9:36	8/2/2012 16:00	Pensacola	3	12/20/2011 19:05	12/21/2011 16:00	Pensacola	5	9/6/2012 8:00	9/6/2012 14:00
Pensacola	1	8/8/2012 14:59	8/8/2012 16:00	Pensacola	3	1/12/2012 8:32	1/12/2012 10:00	Pensacola	5	9/17/2012 8:03	9/17/2012 10:00
Pensacola	1	8/21/2012 12:40	8/21/2012 16:01	Pensacola	3	2/18/2012 20:20	2/19/2012 0:01	Pensacola	5	9/21/2012 7:00	9/21/2012 18:00
Pensacola	1	9/14/2012 9:35	9/14/2012 16:00	Pensacola	3	2/26/2012 5:30	2/27/2012 10:00	Pensacola	5	10/1/2012 0:00	12/31/2012 0:00
Pensacola	1	9/17/2012 8:03	9/17/2012 10:00	Pensacola	3	4/27/2012 9:41	4/27/2012 12:00	Pensacola	5	10/1/2012 8:00	3/11/2013 16:00
Pensacola	1	9/28/2012 12:31	9/29/2012 16:00	Pensacola	3	7/16/2012 12:04	7/16/2012 16:00	Pensacola	5	12/10/2012 8:33	12/10/2012 16:00
Pensacola	1	9/28/2012 12:53	9/29/2012 16:00	Pensacola	3	7/17/2012 8:19	7/18/2012 16:00	Pensacola	5	12/11/2012 8:00	12/11/2012 16:00
Pensacola	1	9/28/2012 13:00	9/29/2012 16:00	Pensacola	3	8/8/2012 13:45	8/8/2012 16:03	Pensacola	5	12/27/2012 8:00	12/27/2012 12:00
Pensacola	1	4/8/2013 7:33	4/8/2013 12:41	Pensacola	3	8/28/2012 12:20	8/28/2012 16:00	Pensacola	5	3/4/2013 9:42	3/4/2013 9:43
Pensacola	1	7/24/2013 18:32	7/24/2013 18:56	Pensacola	3	8/30/2012 8:36	8/30/2012 16:00	Pensacola	5	8/8/2013 2:23	8/8/2013 3:15
Pensacola	1	8/13/2013 15:10	8/13/2013 16:33	Pensacola	3	9/10/2012 7:57	9/10/2012 13:59	Pensacola	5	8/8/2013 14:38	8/8/2013 15:33
Pensacola	1	9/19/2013 6:05	9/19/2013 10:59	Pensacola	3	9/17/2012 8:03	9/17/2012 10:00	Pensacola	5	8/13/2013 15:10	8/13/2013 15:59
Pensacola	1	3/19/2014 0:54	3/19/2014 3:32	Pensacola	3	7/8/2013 12:48	7/8/2013 14:51	Pensacola	5	9/19/2013 6:05	9/19/2013 10:59
Pensacola	1	3/26/2014 12:57	3/26/2014 13:18	Pensacola	3	8/13/2013 15:10	8/13/2013 15:42	Pensacola	5	4/14/2014 18:45	4/14/2014 19:24
Pensacola	1	9/2/2014 14:16	9/2/2014 14:49	Pensacola	3	9/19/2013 6:05	9/19/2013 10:59	Pensacola	5	2/6/2015 13:17	2/6/2015 14:42
Pensacola	1	11/18/2014 6:41	11/18/2014 10:20	Pensacola	3	12/22/2013 20:22	12/22/2013 20:34	Pensacola	5	3/20/2015 9:37	3/20/2015 10:06
Pensacola	1	6/20/2015 18:40	6/20/2015 19:14	Pensacola	3	10/1/2014 0:01	12/22/2014 7:25	Pensacola	5	6/20/2015 18:40	6/20/2015 19:14
Pensacola	1	9/21/2015 10:54	9/21/2015 12:30	Pensacola	3	6/20/2015 18:40	6/20/2015 19:14	Pensacola	5	8/31/2015 14:31	8/31/2015 14:57
Pensacola	1	9/24/2015 15:35	9/24/2015 16:27	Pensacola	3	7/24/2015 20:37	7/25/2015 9:45	Pensacola	5	9/24/2015 15:35	9/24/2015 16:30
Pensacola	1	9/28/2015 9:15	12/9/2015 15:50	Pensacola	3	8/11/2015 21:39	8/12/2015 2:16	Pensacola	5	9/28/2015 9:03	9/28/2015 14:01
Pensacola	2	5/15/2003 13:00	5/15/2003 16:00	Pensacola	3	8/12/2015 9:29	8/12/2015 11:19	Pensacola	5	10/2/2015 15:30	10/2/2015 20:55
Pensacola	2	8/14/2003 5:00	8/15/2003 5:00	Pensacola	3	9/24/2015 15:35	9/24/2015 16:27	Pensacola	5	11/5/2015 8:53	11/6/2015 13:25
Pensacola	2	9/5/2004 5:00	9/19/2004 5:00	Pensacola	3	10/2/2015 15:30	10/2/2015 20:55	Pensacola	6	5/31/2003 5:00	6/15/2003 5:00
Pensacola	2	9/25/2004 11:00	10/2/2004 5:00	Pensacola	3	11/13/2015 19:42	11/14/2015 10:13	Pensacola	6	10/26/2005 5:00	10/27/2005 5:00
Pensacola	2	4/4/2005 14:00	4/4/2005 20:00	Pensacola	3	12/16/2015 8:01	12/16/2015 8:54	Pensacola	6	12/13/2005 23:00	12/16/2005 23:00
Pensacola	2	10/31/2005 19:00	12/31/2005 6:00	Pensacola	4	1/29/2003 14:30	1/29/2003 17:00	Pensacola	6	12/17/2005 6:00	12/20/2005 6:00
Pensacola	2	1/1/2006 18:00	2/28/2006 6:00	Pensacola	4	2/7/2003 6:00	2/8/2003 6:00	Pensacola	6	8/10/2006 5:00	8/15/2006 5

Pensacola Dissolved Oxygen Air Valve Data

• Average Measured DO (ppm) — OWRB Title 785.45-5-12 Prescribed DO × No. Open Air Valves (Calculated)

