

An Oklahoma agency of excellence ...



Pensacola Hydroelectric Project

FERC No. 1494-438

Cultural Resources Working Group Meeting

May 31, 2018

Meeting Agenda

Introductions, review agenda, purpose of meeting	1:00 pm – 1:15 pm
Overview of Proposed Cultural Resources Study	1:15 pm – 1:45 pm
Proposed Area of Potential Effects (APE)	1:45 pm – 2:15 pm
Background Research and Archival Review	2:15 pm – 2:45 pm
Break	2:45 pm – 3:00 pm
Pre-fieldwork Report (PFR)	3:00 pm – 3:20 pm
Reconnaissance Surveys	3:20 pm – 4:00 pm
Inventory of Traditional Cultural Properties	4:00 pm – 4:30 pm
Programmatic Agreement (PA) and Historic Properties Management Plan (HPMP)	4:30 pm – 5:00 pm

Cultural Resources Working Group Meeting

- Meeting Purpose and Overview
 - Introduce the Pensacola Project Cultural Resources Working Group (CRWG).
 - Describe GRDA's approach to the Cultural Resources Study.
 - Initiate discussions with the CRWG regarding proposed Cultural Resources Study tasks.
 - Discuss next steps and additional consultation with the CRWG.

Cultural Resources Working Group Meeting

- The Cultural Resources Working Group (CRWG) includes GRDA, Commission staff, the Oklahoma State Historic Preservation Office (SHPO), Oklahoma Archaeological Survey (OAS), the Advisory Council on Historic Preservation, Native American Tribes, and the Bureau of Indian Affairs (BIA).
- Role of the CRWG:
 - Facilitates consultation pursuant to the requirements of Section 106 of the National Historic Preservation Act (NHPA).
 - Serves as a forum for discussion of the Cultural Resources Study Plan, the results of studies, and the development of an Historic Properties Management Plan (HPMP).
 - Assists in study planning activities.

Cultural Resources Working Group Meeting

- Responsibilities of Cultural Resources Working Group (CRWG) participants:
 - Review documents and correspondence related to the Cultural Resources Study, including study plans and study reports.
 - Participate collaboratively in CRWG meetings.
 - Provide timely comments and input to assist in the study planning process and the implementation of field studies.
 - Maintain confidentiality regarding archaeological resources and properties of traditional religious or cultural importance (“Traditional Cultural Properties” or “TCPs”).
 - Work collaboratively with other CRWG participants, recognizing that participants may have differing values and/or priorities.

GRDA's Approach to the Cultural Resources Study

- The Integrated Licensing Process (ILP) affords a limited, 2-year window (Study Year One and Study Year Two) for conducting cultural resources studies during Project relicensing – particularly when considering the vast geographic area occupied by the Project and other areas that may be affected by Project operations (e.g., 667 miles of Grand Lake shoreline).
- Recognizing the constraints of the ILP in the context of the overall geographical scope of the anticipated Area of Potential Effects (APE) for the Pensacola Project is important to developing study methods and schedules that can realistically achieve the goals of the study.

GRDA's Approach to the Cultural Resources Study

- GRDA's approach to the study will be to:
 - (1) Work with the Cultural Resources Working Group (CRWG) to identify high-priority areas and sites within the Area of Potential Effects (APE) for study during the 2-year Integrated Licensing Process (ILP), for purposes of informing the Federal Energy Regulatory Commission's (FERC) analyses under both Section 106 and the National Environmental Policy Act (NEPA); and
 - (2) Continue cultural resource investigations post-licensing (as necessary) over a longer period of time as part of the Historic Properties Management Plan (HPMP).
- This longer-term phased approach has been successfully implemented at other large FERC-licensed projects, and is consistent with FERC's Scoping Document 2:
 - "If time does not permit study of these areas prior to submittal of a license application, a requirement for future study of these areas could be required as part of any license issued for the project."

Cultural Resources Study – Goals and Objectives

- **Goals and Objectives**

- Consult with the Cultural Resources Working Group (CRWG) to determine the Project's Area of Potential Effects (APE).
- Conduct background research and an archival review.
- Prepare a Pre-fieldwork Report (PFR) based on the results of the background literature and archival review.
- Consult with the CRWG to identify and target appropriate areas of the APE for field investigation during Project relicensing.
- During Study Years One and Two, conduct field investigations to include a Phase I Reconnaissance Survey (Reconnaissance Survey) of targeted areas which would include a visual inspection and the excavation of limited shovel tests. If sites are identified, delineate in the field.

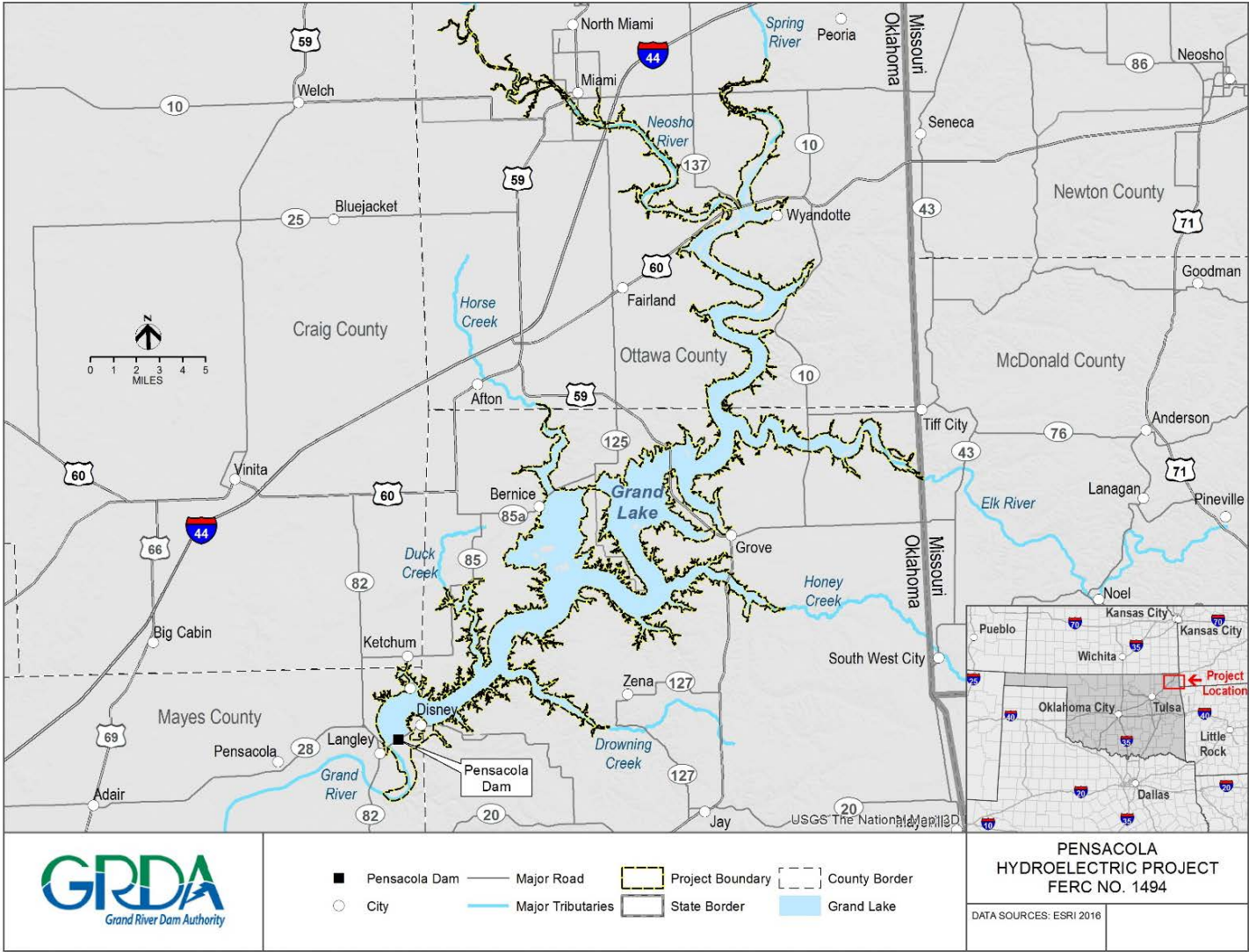
Cultural Resources Study – Goals and Objectives

- Goals and Objectives (continued)
 - Following Study Year One, prepare a Reconnaissance Survey Report as part of the Initial Study Report (ISR) that provides study results and recommendations for identified archaeological resources and/or additional investigations, as necessary. Following Study Year Two, prepare the same report as part of the Updated Study Report (USR) for the sites identified during the Study Year Two investigation.
 - Determine appropriate management measures for identified resources and the need for additional resource investigations in consultation with the Cultural Resources Working Group (CRWG).
 - Develop an Historic Properties Management Plan (HPMP) in consultation with the CRWG to provide appropriate measures for the management of historic properties within the Project's Area of Potential Effects (APE) through the term of the new license. The HPMP would be prepared during the Integrated Licensing Process (ILP) and filed with the Federal Energy Regulatory Commission (FERC) as part of GRDA's relicensing application. As appropriate, the HPMP may include provisions for additional studies to be conducted post-licensing, on a schedule determined in consultation with the CRWG.

Cultural Resources Study - Proposed Area of Potential Effects

- GRDA has proposed an Area of Potential Effects (APE) for this undertaking that includes all lands within the Federal Energy Regulatory Commission (FERC)-approved Project boundary. The APE also includes lands or properties outside the Project boundary where Project operations or Project-related recreation activities or other enhancements may cause changes in the character or use of historic properties, if any such properties exist.
 - The Project boundary is defined by a combination of a metes and bounds description and generally follows contour elevation 750 feet Pensacola datum (PD). It encompasses 53,965 acres, including the 45,200 acres of the Project reservoir (at the upper extent of the conservation pool of 745 feet PD).
 - The Project boundary encompasses all Project facilities and works, Project recreation areas, and a shoreline buffer around the entire reservoir (generally between 745 and 750 feet PD).

Cultural Resources Study - Proposed Area of Potential Effects (Study Area)



Cultural Resources Study - Proposed Area of Potential Effects

- The Area of Potential Effects (APE) proposed by GRDA recognizes that the geographical extent of the APE may be refined based on the results of the Hydrologic & Hydraulic Modeling Study (H&H Study) or other studies if such studies indicate that the Project has the potential to adversely affect historic properties in areas outside the current Project boundary.
 - This approach is consistent with FERC’s Scoping Document 2, which states that “if the results of other relicensing studies (e.g., any flood routing, geologic, recreation, and other studies) identify additional areas where project-related activities may affect cultural resources, those areas would also be included in the APE.”
 - The geographical extent of the APE may be refined in Study Year Two in consultation with the Cultural Resources Working Group (CRWG).

Cultural Resources Study - Background Research and Archival Review

- GRDA will conduct background research and an archival review to inform the specific research design and the historic and environmental contexts of the Area of Potential Effects (APE).
 - GRDA will review relevant information, including:
 - Information on archaeological sites, historic architectural resources, and previous cultural resources studies on file with Oklahoma Archaeological Survey (OAS), Oklahoma State Historic Preservation Office (SHPO), and Native American Tribes;
 - Available reports on previous cultural resources studies conducted within the APE;
 - A review of the Oklahoma Landmarks Inventory (OLI) and Oklahoma’s National Register of Historic Places (NRHP) listings;
 - Historic maps and aerial photographs of the APE, including relevant plat and Sanborn maps;
 - Aerial photographs of the APE;
 - Relevant documents related to Project construction;
 - Relevant information available from local repositories;
 - Information on the current and historical environment, including mapped soils, bedrock geology, geomorphology, physiography, topography, and hydrology in the vicinity of the APE;
 - Relevant historical accounts of the Project area;
 - Relevant management plans for the Project;
 - Historic context statements for Management Region 3 available from the Oklahoma SHPO; and
 - Any additional relevant information made available by the Cultural Resources Working Group (CRWG) or other relicensing participants.

Cultural Resources Study - Background Research and Archival Review

- GRDA initiated background research and archival review in support of developing the Pre-Application Document (PAD).
 - Information collected to date includes information on archaeological sites, historic architectural resources, Oklahoma Landmarks Inventory (OLI) properties on file with Oklahoma Archaeological Survey (OAS) and Oklahoma State Historic Preservation Office (SHPO).
 - GRDA anticipates additional coordination with Native American Tribes regarding information on previously reported archaeological and historic resources within the Area of Potential Effects (APE).
- As part of the background research and archival review, GRDA may undertake limited field observations to better characterize and document existing shoreline conditions at the reservoir and inform the Pre-fieldwork Report (PFR).

Cultural Resources Study - Pre-fieldwork Report

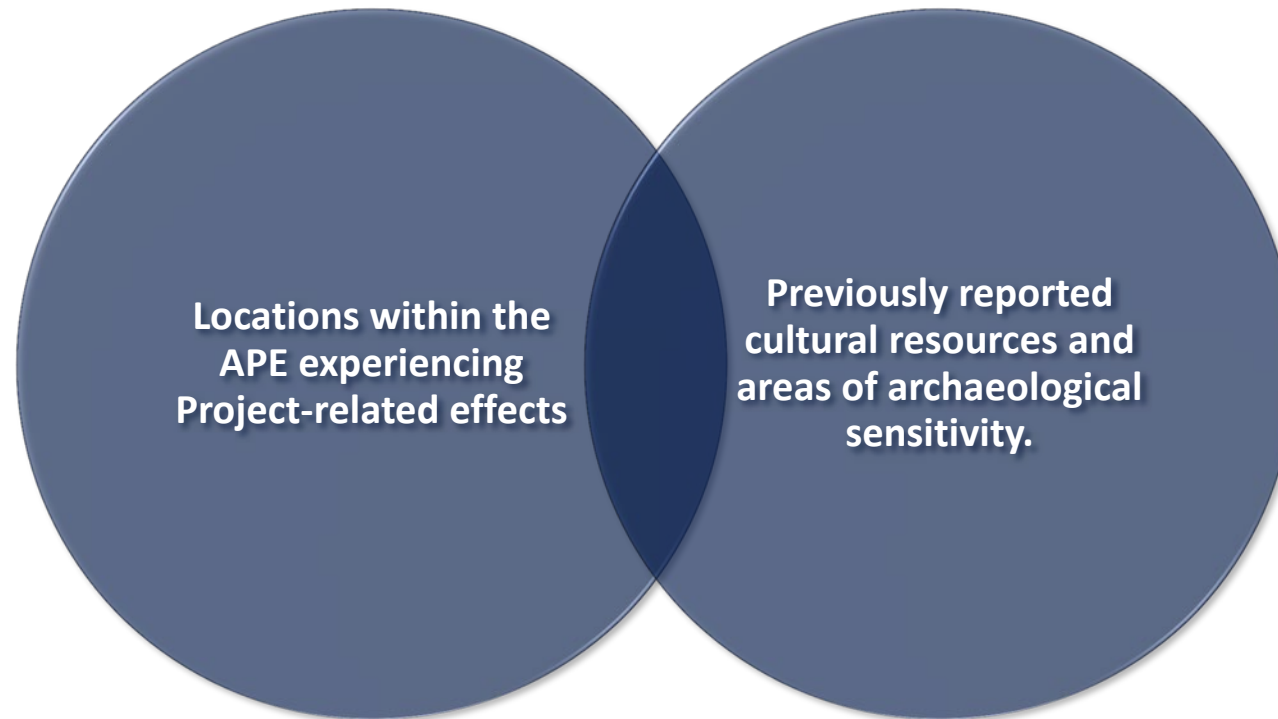
- The goal of the Pre-fieldwork Report (PFR) is to assist the Cultural Resources Working Group (CRWG) in identifying high-priority areas and archaeological sites within the Area of Potential Effects (APE) for study during the 2-year Integrated Licensing Process (ILP) study window. The PFR will document:
 - Previously reported archaeological sites, historic resources, and relevant map-documented structures;
 - Areas with archaeological sensitivity, such as pre-Project terrace landforms, the outlets of tributary streams, and other landscape features; pre-Project trails and roads; and historic towns, villages, or other population centers; and
 - Areas identified within the APE where erosion or other Project-related effects are occurring.

Cultural Resources Study - Pre-fieldwork Report

- The development of the Pre-fieldwork Report (PFR) is consistent with the Advisory Council on Historic Preservation's Section 106 Archaeology Guidance:
 - "...archaeological identification efforts for a license renewal from the Federal Energy Regulatory Commission (FERC) likely would not involve the entire Area of Potential Effects (APE). Rather it would be directed to those locations within the APE that are experiencing Project-related effects associated with operation, usually along the shoreline."

Cultural Resources Study - Pre-fieldwork Report

- The Pre-fieldwork Report (PFR) will identify potential high-priority locations within the Area of Potential Effects (APE) for study during the 2-year Integrated Licensing Process (ILP).
 - Specific locations to be determined in consultation with the Cultural Resources Working Group (CRWG) and based on field observations.



Cultural Resources Study - Reconnaissance Surveys

- GRDA will conduct a Reconnaissance Survey of the Project's Area of Potential Effects (APE) during Study Year One and Study Year Two.
 - Reconnaissance Surveys will be conducted by a qualified professionals retained by GRDA that meet the Secretary of the Interior's Professional Qualification Standards.
 - Reconnaissance Surveys will include a visual reconnaissance of the exposed portions of the reservoir shoreline to identify previously recorded or unrecorded archaeological and/or historic architectural resources.
 - If archaeological material is observed during the Reconnaissance Survey, GRDA will delineate site boundaries, record site information, and collect cultural material.
 - If individual historic architectural resources or districts that potentially meet the National Register of Historic Places (NRHP) criteria are observed, GRDA will geo-locate the resource and delineate the boundary.

Cultural Resources Study - Reconnaissance Surveys

- Following Study Year One, GRDA will prepare a Reconnaissance Survey Report as part of the Initial Study Report (ISR) that provides:
 - Study results and recommendations for identified archaeological and historic resources, including any recommendations for additional cultural resources investigations, as appropriate.
- GRDA will consult with the CRWG regarding the Study Year One Reconnaissance Survey.
- During Study Year Two, GRDA will conduct a second Reconnaissance Survey of the Area of Potential Effects (APE). The locations of the Study Year Two survey will be determined in consultation with the Cultural Resources Working Group (CRWG).
 - GRDA expects that the results of the Hydrologic and Hydraulic Modeling Study (H&H Study) will assist GRDA and the CRWG in refining the appropriate areas for study during Study Year Two, if needed.

Cultural Resources Study - Reconnaissance Surveys

- Following Study Year Two, GRDA will prepare a Reconnaissance Survey Report as part of the Updated Study Report (USR) that provides:
 - Study results and recommendations for identified archaeological and historic resources, including any recommendations for additional cultural resources investigations, as appropriate.
- GRDA will consult with the Cultural Resources Working Group (CRWG) regarding the Study Year Two Reconnaissance Survey Report.

Cultural Resources Study - Traditional Cultural Properties

- GRDA recognizes the special expertise that the Native American Tribes have in identifying properties that have traditional and religious significance to their communities.
- GRDA will consult with Native American Tribes to develop specific methods and approaches to conducting a Traditional Cultural Properties (TCP) inventory for lands within the Area of Potential Effects (APE).
- GRDA proposes to consult with Native American Tribes during Study Year One to develop the specific TCP study methods and to initiate the TCP study during Study Year Two.

Cultural Resources Study - Programmatic Agreement

- GRDA anticipates that the Federal Energy Regulatory Commission (FERC) will enter into a Programmatic Agreement (PA) with the Oklahoma State Historic Preservation Office (SHPO) for managing historic properties that may be affected by Project operations or activities during the term of the new license.
- The PA will formally meet the Commission's obligations under National Historic Preservation Act (NHPA) Section 106 for the relicensing of the Project, and is likely to provide for GRDA to implement an Historic Properties Management Plan (HPMP) for the long-term management of historic properties during the new license term.

Cultural Resources Study - Historic Properties Management Plan

- In anticipation of a Programmatic Agreement (PA), GRDA will prepare an Historic Properties Management Plan (HPMP) providing measures that will direct GRDA's management of historic properties within the Project's Area of Potential Effects (APE) throughout the term of the new license.
- GRDA will develop the HPMP in consultation with the Cultural Resources Working Group (CRWG); through this consultation, GRDA and the CRWG will develop specific management measures to be incorporated into the HPMP.

Cultural Resources Study - Historic Properties Management Plan

- The Historic Properties Management Plan (HPMP) will be developed in accordance with the *Guidelines for the Development of Historic Properties Management Plans for Federal Energy Regulatory Commission (FERC) Hydroelectric Projects*, promulgated by the FERC and the Advisory Council on Historic Preservation.
- GRDA anticipates that the HPMP will address the following items:
 - Any additional studies necessary to assist in the identification or management of historic properties within the Area of Potential Effects (APE), including a schedule for completing such studies;
 - A plan and schedule for completing Reconnaissance Surveys of areas within the APE identified in consultation with the Cultural Resources Working Group (CRWG), including areas where Reconnaissance Surveys could not be completed during the Integrated Licensing Process (ILP);
 - Potential effects on historic properties resulting from the continued operation and maintenance of the Project;

Cultural Resources Study - Historic Properties Management Plan

- Management and treatment measures for historic properties (including any identified Traditional Cultural Properties [TCPs]);
- Protection of historic properties threatened by potential ground-disturbing or land-clearing activities during the term of the new license;
- Protection of historic properties threatened by other direct or indirect Project-related activities, including routine Project maintenance;
- The resolution of unavoidable adverse effects on historic properties;
- Treatment and disposition of any human remains that are discovered;
- Provisions for unanticipated discoveries of previously unidentified cultural resources within the Area of Potential Effects (APE);
- A dispute resolution process;

Cultural Resources Study - Historic Properties Management Plan

- Categorical exclusions from further review of effects;
- Public interpretation of the historic and archaeological values of the Project, if any;
- Specific measures and a schedule for implementing the Historic Properties Management Plan (HPMP);
- Roles and responsibilities of GRDA, the Oklahoma State Historic Preservation Office (SHPO), Oklahoma Archaeological Survey (OAS), Native American Tribes, and other individuals and organizations in regards to implementation of the HPMP; and
- Coordination with the Cultural Resources Working Group (CRWG) during implementation of the HPMP.

Cultural Resources Study – Schedule

Task/Milestone	Anticipated Schedule
Consultation with the CRWG to define the APE	May 2018
Background research and archival review	September 2018 – April 2019
Consultation to develop TCP inventory methods	September 2018
Pre-fieldwork Study Report	April 2019
Study Year One Reconnaissance Survey	May 2019 – August 2019
Study Year One Reconnaissance Survey Report	September 2019
Initial Study Report	September 2019
Study Year Two Reconnaissance Survey	May 2020 – August 2020
Initiate TCP Inventory	May 2020
Study Year Two Reconnaissance Survey Report	September 2020
Updated Study Report	September 2020
File HPMP with the Commission	March 2020

Contact Information

Jacklyn Jaggars

Administrative Assistant

Grand River Dam Authority

Ecosystems & Education Center

PO Box 70

Langley, OK 74350-0070

(918) 256-0723

jjaggars@grda.com

<http://www.grda.com/pensacola-hydroelectric-project-relicensing/>

Questions?